

Nanyang Technological University
National Institute of Education
1 Nanyang Walk
Singapore 637616
Republic of Singapore
Telephone: 67903888
Fax: 68969274

NTU Reg. No. 200604393R

Information in this handbook is accurate as of 24 August 2017

July 2017

ENQUIRIES

For enquiries on admission to initial teacher preparation (ITP) programmes offered by NIE, please email to:

nieadmtp@nie.edu.sg.

You may wish to visit the following NIE homepage for information on the ITP programmes:

<http://www.nie.edu.sg>.

Because of the large number of candidates seeking admission, we regret that no telephone or personal enquiries will be entertained.

For enquiries on the terms and conditions of service as an MOE Education Officer, please refer to the MOE Trainee Teacher Handbook. If you have further queries, please email to:

moe_ru_hscd@moe.gov.sg.

CONTENTS

National Institute of Education	1
NIE Council	13
Procedures for Application.....	18
Tuition Fees & Tuition Grants for MOE-Sponsored Candidates	21
Tuition Fees & Other Miscellaneous Fees for Full-Fee Paying Candidates	26
Leave of Absence and Medical/Dental Claims.....	34
Academic Warning, Probation and Termination.....	37
Academic Integrity	38
Copyright and You	39
Code of Conduct and Dress Code for Student Teachers on Campus	44
Financial Assistance Schemes	48
Prizes and Awards	50
The NIE Wellness Centre	64
Facilities	65
NTU Facilities/Services.....	79
Trainee Teachers' Club	88
Other Student Organisations	90
CCA System	91
The NIE Club Award.....	93
The Passion Award.....	96
The NIE Award.....	97
Emergency Escape Routes	98
NIE Location Map	99

The information in this handbook is based on information available at the time of publication. The Institute reserves the right to make alterations without notice.

National Institute of Education

Establishment

The National Institute of Education (NIE) was established on 1 July 1991 as an institute of the Nanyang Technological University (NTU).

NIE's Vision

To be an Institute of Distinction

NIE's Mission

To excel in teacher education and educational research

Objectives

- to equip teachers and school leaders with the knowledge and professional expertise necessary for teaching and managing educational programmes in challenging school environments
- to provide academic programmes at all levels in Education, Physical Education and Sports Science, the Arts and Sciences
- to undertake and promote research in Education, Physical Education and Sports Science, the Arts and Sciences, and other disciplines relevant to teacher training
- to offer continuing education and professional development programmes to meet the needs of other government bodies and the general public

Programmes

The Institute offers a variety of programmes leading to a range of qualifications from diplomas to bachelor degrees to postgraduate degrees.

The bachelor's degree programmes aim to provide rigorous university education and to produce graduates with the skills to teach effectively in schools. The programmes lead to the award of the following degrees:

- **Bachelor of Arts (Education) [BA (Ed)]**

- **Bachelor of Science (Education) [BSc (Ed)]**

Candidates may be awarded honours degrees based on overall performance in these programmes.

Other programmes of initial teacher preparation lead to the award of the following qualifications:

- **Postgraduate Diploma in Education [PGDE]**

which qualifies a university degree holder to join the teaching profession. It has several specialisations, namely, junior college teaching, secondary school teaching, primary school teaching and teaching of Physical Education.

- **Diploma in Education [Dip Ed]**

which qualifies GCE 'A' level holders and Polytechnic Diploma holders to teach in primary schools [for Dip Ed (General) and Dip Ed (Chinese/Malay/Tamil)] and in secondary schools [for Dip Ed (Art/ Music/ Malay/Tamil Specialisation)] as well as GCE 'O' Level holders to teach Chinese Language in primary schools after completing the Diploma in Chinese Studies (Teaching) at Ngee Ann Polytechnic.

- **Diploma in Physical Education [Dip PE]**
which qualifies GCE 'A' level holders and Polytechnic Diploma holders to teach Physical Education in primary schools.
- **Diploma in Art/Music Education [Dip Art/Mus Ed]**
which qualifies holders of diplomas from the polytechnics, Nanyang Academy of Fine Arts or the LASALLE College of the Arts to teach Art / Music in primary or secondary schools.
- **Diploma in Home Economics Education [Dip HE Ed]**
which qualifies holders of Temasek Polytechnic's Diploma in Consumer Science & Technology to teach Home Economics in secondary schools.
- **Diploma in Special Education [DISE]**
which qualifies nominated teachers of special education organisations and Allied Educator (Learning & Behavioural Support) officers of the Ministry of Education to teach special needs children in organisations and schools.

The Institute also conducts leadership programmes for practising teachers who may assume leadership positions. These include the following:

- **Management and Leadership in Schools [MLS]**
Designed for middle level leaders to expand their roles beyond departments and take on direct leadership for teaching and learning for the innovative school.
- **Leaders in Education Programme [LEP]**
Designed for selected education officers to prepare them for school leadership.
- **Building Educational Bridges [BEB]: Innovation for School Leadership**
A joint programme by NIE and various international institutions for selected school leaders to engage in issues relating to countries' unique educational systems.

■ **Teacher Leaders Programme**

Designed for leaders on the Teaching Track (Senior Teachers, Lead Teachers and Master Teachers) and aims to nurture them as ethical educators, competent professionals, collaborative learners, transformational leaders and community builders.

For more information on Teacher Leaders programmes, please visit <http://www.nie.edu.sg/teacher-education/teacher-leaders-programme/>

Higher Degree Programmes by Research

The Institute provides opportunities for students to undertake research in a field of their own interest through the following higher degree studies by research:

- Doctor of Philosophy (Education, Arts and Humanities, Physical Education and Sciences)
- Master of Arts (Education, Arts and Humanities and Physical Education)
- Master of Science (Mathematics, Physical Education and Sciences).

Higher Degree Programmes by Coursework

The Institute also offers a wide range of Master's degree by coursework programmes with the options of completing the programme through either a coursework only or a coursework with dissertation route:

Doctoral programme (by Coursework with Dissertation)

■ Doctor in Education

The Doctor in Education (EdD) programme is designed for professionals in education and education-related fields, who would like to extend their expertise and training and develop skills in research, evaluation and reflection on practice. It has the rigour and expectations of a PhD, but with a professional focus. One of the major aims of the EdD is to develop professional leaders who are able to identify and solve complex "field based" problems. Professional doctorates stress the application of research, development of professional knowledge and creation of knowledge within the profession. Flexibility, choice and focus are provided for in the EdD programme through the offer of four concentrations:

- Learning and Motivation Concentration
- Curriculum and Teaching Concentration
- Educational Leadership and Change Concentration
- Technologies and Technology-Mediated Learning Environments Concentration.

Master's programmes (either by Coursework Only or by Coursework with Dissertation)

■ Master of Arts (Applied Linguistics)

Focusing on the needs of English language teachers, curriculum specialists, school inspectors, school heads of departments and language lecturers of tertiary institutions, this programme balances coverage of theoretical knowledge with practical application. Participants will critically review current research in applied linguistics and develop a strong foundation in linguistics and language learning concepts. They will also have opportunities to apply their new knowledge to their specific language education contexts. As part of their overall professional development as language educators, participants will learn relevant skills for conducting classroom research.

■ **Master of Arts (Applied Psychology)**

The aim of this programme is to produce graduates who will become leaders in the field of psychological service.

It is designed to provide theoretical knowledge and research insights as well as practical skills to interested individuals who have the pre-requisite qualifications to train as specialists in the field of Educational Psychology or Counselling Psychology. The programme provides specialist training as an Educational Psychologist or a Counselling Psychologist. It also provides graduates with training towards becoming a Registered Psychologist in Singapore.

■ **Master of Arts (Educational Management)**

This programme is designed to enhance the leadership capabilities of school executives as well as managers of other educational sectors, and adds value to the continual development of human resources in their organisations. It aims to enable aspiring leaders in education to become more informed about critical issues in educational management, and to cope positively and effectively with the management challenges that are currently impacting on education.

■ **Master of Arts (Instructional Design & Technology)**

This programme is designed for educational and training professionals working in schools, universities, polytechnics, businesses and e-learning industries. Participants will learn about the design, application, development and management of information technologies (including the use of e-learning), as well as theoretical underpinnings of designing learning environments. It aims to impart to participants the theoretical knowledge and practical skills in solving instructional problems in school and corporate learning environments.

■ **Master of Arts in Humanities Education**

This is a programme which can support teachers who may need to respond with cross-disciplinary perspectives in the disciplines of geography, history and social studies. It aims to help participants develop a critical understanding of social studies, history and geography with a strong grounding in the philosophies that have guided both scholarship and the development of each of the relevant disciplines and how these can be applied to studies of the social issues of our time. While the programme is designed for those who have relevant background knowledge in one or more of the disciplines of geography, history and social studies, it is also tailored for participants wishing to broaden their multi-disciplinary perspectives in the development of our societies.

■ **Master of Education**

This programme is primarily designed for educators working in Singapore schools and the Ministry of Education, although university graduates with a background in teaching and wishing to advance their knowledge and skills in education may also be admitted. It offers the degree in any of the following 17 areas of specialisation:

- Art
- Chinese Language
- Curriculum and Teaching
- Developmental Psychology
- Drama
- Early Childhood
- Educational Assessment
- English
- High Ability Studies
- Learning Sciences and Technologies
- Malay Language
- Mathematics
- Music

- Primary
- Science
- Special Education
- Tamil Language.

■ **Master of Science (Exercise & Sport Studies)**

This programme is designed for participants with a general interest in human movement studies, including physical education, sport, fitness, health and wellness. It enables participants to work with the faculty in areas of a particular interest and to complement these interest areas with related courses from the Physical Education and Sports Science Academic Group as well as across the university. Participants will acquire research skills (both qualitative and quantitative) which will encourage critical inquiry and creative thinking in dimensions of the human movement sciences.

■ **Master of Science (Life Sciences)**

This programme is designed to meet the needs of teachers, science graduates and professionals interested in the life sciences. It aims to provide teachers and science graduates with specialised knowledge in the various fields of life sciences, by addressing not only the knowledge base but also the necessary experimental skills required. Without sacrificing the necessary breadth and depth of the multi-disciplinary nature of the life sciences, participants are offered a highly personalised roadmap in which the most recent scientific developments are taught, and social and bioethical issues are discussed. As participants receive training in basic concepts, and conduct experiments and projects under experienced and highly qualified scientists, they are given the opportunity to interact and explore vast new realms in the life sciences.

There are five areas of specialisation:

- Clean Energy Physics
- Applied Plant Sciences
- Chemistry

- Environmental Science
- Zoological Sciences.

Master's Programmes (by Coursework only)

■ Master of Arts (Counselling and Guidance)

This programme is designed to equip counselling graduates with skills and knowledge in various counselling core areas to maximise the counsellor's level of functioning and the capacity to conduct research. The programme emphasises a developmental perspective, focusing on issues pertinent to providing counselling and guidance services and programme development. The counsellors' personal and professional growth and development, appreciation of diversity and demonstration of understanding ethical and legal issues are also emphasised. The practicum allows application of theories and techniques leading to effective individual and group counselling. This rigorous, informative and structured training programme is a course-work oriented professional degree that is designed to prepare new entrants into the fields of counselling and guidance as highly competent and caring counsellors. It is also designed to enhance and upgrade the knowledge and skills of counsellors at a master's level and to prepare those who may wish to pursue a doctoral education later.

■ Master of Arts in Teaching Chinese as an International Language

The Master of Arts in Teaching Chinese as an International Language (MA TCIL) programme is NIE's strategic response to this worldwide trend. Offered by Asian Languages and Cultures Academic Group in NIE, the programme aims to train and prepare educators who are bilingual in both English and Chinese to teach Chinese in countries where Chinese is not the dominant language. It is primarily targeted at educators who desire to specialise in the theory and practice of teaching Chinese as a

foreign/second/international language to learners whose first language is English (CIL learners).

■ **Master of Arts (Leadership and Educational Change)**

This is an innovative programme with a dual focus on organisational and curriculum leadership. The programme aims to prepare educational leaders to go beyond organisational leadership towards embracing leadership capacities in curriculum, teaching and learning. Jointly taught by two internationally-renowned teacher education institutions, the National Institute of Education, Nanyang Technological University, Singapore and Teachers College, Columbia University, New York, the programme prepares a new generation of educational leaders for Singapore, the Asia-Pacific region and the larger international community.

■ **Master of Arts in Professional Education (Training and Development)**

The Master of Arts in Professional Education (MAPE) seeks to deepen academic knowledge and competencies for individuals who work in or wish to move into professional roles within various settings of higher and adult professional education. This programme aims to provide a rigorous understanding of educational practices and systems from social, philosophical, psychological, cross-national and normative perspectives, and an understanding of central issues in learning and development, education and training, and educational leadership in the various professional contexts. Its specific objective is to educate professional educators with values and beliefs as well as equipping them with a distinct set of adult educator (AE) skills to drive mentoring and coaching, innovative training, assessment and design practices.

■ **Master of Science (Mathematics for Educators)**

This programme is designed to cater to the professional needs of mathematics educators, emphasising the acquisition of wide and in-depth content knowledge in mathematics as well as its linkage to mathematics teaching. Participants will have the opportunity to study courses in different areas of mathematics, conducted by active working mathematicians, many of them holding a qualification in teaching of mathematics. A strong mastery of mathematics will enable educators to teach better and to promote higher order thinking among students in the learning of mathematics. Mathematics specialists in education institutes will also benefit from this programme because a good understanding of mathematics is crucial for handling various tasks related to mathematics education, such as the design of contemporary and rigorous curricula, assessment of mathematics learning, and development of teaching resources.

For more information on higher degree programmes, please visit www.nie.edu.sg/gpl/hd

The Institute has a wide range of exciting and interesting courses and programmes for teacher professional development. Participants can apply to be conferred an Advanced Diploma upon attaining the required number of Academic Units.

The list of Advanced Diplomas is as follows:

- Advanced Diploma in Special Learning and Behavioural Needs
- Advanced Diploma in Primary Art Education
- Advanced Diploma in Primary Music Education
- Advanced Diploma in Primary English Language Education
- Advanced Diploma in Primary Science Education
- Advanced Diploma in Primary Mathematics Education
- Advanced Diploma in Teaching Early Primary School Years
- Advanced Diploma in Special Education

■ Advanced Diploma in Teaching
Also available are two in-service Diploma Programmes

- Diploma in Physical Education (In-Service)
- Diploma in Educational Psychology.

In addition, there are five in-service Certificate Programmes

- Certificate in Special Needs Support
- Certificate in Educational Support
- Certificate in Primary English Language Education
- Certificate in Primary Science Education
- Certificate in Primary Mathematics Education

For more information on teacher professional development programmes, please visit www.nie.edu.sg/gpl/pd

NIE Council

The Institute's operations are overseen by a Council consisting of the following members:

Chairman

Ms Chan Lai Fung
Permanent Secretary (Education)
Ministry of Education

Deputy Chairman

Ms Ho Peng
Advisor
Ministry of Education

Members

Prof Tan Oon Seng (Ex-officio)
Director
National Institute of Education

Prof Kam Chan Hin
Deputy Provost (Education)
Nanyang Technological University

Prof Cheong Hee Kiat
President
Office of the President
Singapore University of Social Sciences (SUSS)

Ms Jacqueline Poh
Chief Executive
Government Technology Agency of Singapore

Mr Edward D'Silva
Senior Advisor
SAA Architects Pte Ltd

Ms Low Khah Gek
Chief Executive Officer
Institute of Technical Education

Mr Clarence Tang
Divisional Director, HR Solutions and Capabilities
Ministry of Education

Mrs Chua-Lim Yen Ching
Deputy Director-General of Education
(Professional Development) and
Executive Director, Academy of
Singapore Teachers
Ministry of Education

Mr Lim Teck Yin
CEO
Sport Singapore

**National Institute of Education
Academic Calendar
Academic Year 2017-2018**

Programme	Dates of Orientation (O+) Teaching Weeks (TW) / Recess (R) / Vacation (V)	Dates of Revision / Examination / Compulsory Events	Dates of Practicum
Dip Ed Year 1 Dip PE Year 1 Dip Art Ed Year 1 Dip Music Ed Year 1	Semester 1 O+ : 31 Jul 2017 – 11 Aug 2017 TW: 14 Aug 2017 – 08 Dec 2017 R : 30 Sep 2017 – 08 Oct 2017 V : 09 Dec 2017 – 14 Jan 2018 Semester 2 TW : 15 Jan 2018 – 11/25 May 2018@ R : 03 Mar 2018 – 11 Mar 2018 V : 12/26 May 2018 – 05 Aug 2018**	18 Nov 2017 – 08 Dec 2017 21 Apr 2018 – 11 May 2018	NIL 25 June – 27 July 2018 (5 weeks of Teaching Practice 1 during the vacation before Year 2)
Dip Ed Year 2 Dip PE Year 2 Dip Art Ed Year 2 Dip Music Ed Year 2	Semester 1 TW: 14 Aug 2017 – 08 Dec 2017 R : 30 Sep 2017 – 08 Oct 2017 V : 09 Dec 2017 – 14 Jan 2018 Semester 2 TW : 15 Jan 2018 – 25 May 2018 R : 17 Mar 2018 – 25 Mar 2018	18 Nov 2017 – 08 Dec 2017 14 May 2018 – 25 May 2018 (Beginning Teachers' Orientation Programme is compulsory)	NIL 26 February – 11 May 2018* (10 weeks of Teaching Practice)
Dip HE Ed (1-Year Prog) Dip Ed (1-year CL Prog) Dip Art Ed (1-Year Prog) Dip Music Ed (1-Year Prog)	Semester 1 O+ : 31 Jul 2017 – 11 Aug 2017 TW: 14 Aug 2017 – 08 Dec 2017 R : 30 Sep 2017 – 08 Oct 2017 V : 09 Dec 2017 – 14 Jan 2018 Semester 2 TW : 15 Jan 2018 – 25 May 2018 R : 17 Mar 2018 – 25 Mar 2018	18 Nov 2017 – 08 Dec 2017 14 May 2018 – 25 May 2018 (Beginning Teachers' Orientation Programme is compulsory)	NIL 26 February – 11 May 2018* (10 weeks of Teaching Practice)
DISE (1-Year Prog)	Semester 1 O+ : 31 Jul 2017 – 11 Aug 2017 TW: 14 Aug 2017 – 08 Dec 2017 R : 30 Sep 2017 – 08 Oct 2017 V : 09 Dec 2017 – 14 Jan 2018 Semester 2 TW : 15 Jan 2018 – 11 May 2018 R : 17 Mar 2018 – 25 Mar 2018	- -	NIL 26 February – 11 May 2018* (10 weeks of Practicum)
DISE (Part-Time Prog) (Jul 2016 Intake)	Semester 1 TW: 27 Jun 2016 – 18 Nov 2016 V : 19 Nov 2016 – 01 Jan 2017 Semester 2 TW: 02 Jan 2017 – 26 May 2017 V : 27 May 2017 – 25 Jun 2017 Semester 1 TW: 26 Jun 2017 – 17 Nov 2017	- -	NIL NIL 10 July – 22 September 2017* (10 weeks of Practicum)

- * If NTU recess falls within the Practicum period, that programme will follow the school's one-week break
- + Orientation includes Registration of Courses
- ** Practicum starts during vacation period
- @ Student Teachers taking CS English Language will attend CELS sessions from 14 to 25 May 2018

Programme	Dates of Orientation (O+) Teaching Weeks (TW) / Recess(R) / Vacation (V)	Dates of Revision / Examination / Compulsory Events	Dates of Practicum
BA/BSc (Ed) Year 1	Semester 1 O+ : 19 Jul 2017 – 21 Jul 2017 07 Aug 2017 – 12 Aug 2017 TW: 14 Aug 2017 – 08 Dec 2017 R : 30 Sep 2017 – 08 Oct 2017 V : 09 Dec 2017 – 14 Jan 2018 Semester 2 TW: 15 Jan 2018 – 11 May 2018 R : 03 Mar 2018 – 11 Mar 2018 V : 12 May 2018 – 05 Aug 2018**	18 Nov 2017 – 08 Dec 2017 21 Apr 2018 – 11 May 2018	NIL 14 May 2018 – 06 July 2018 (BUILD) 09 July – 20 July 2018 (2 weeks of School Experience during the vacation before Year 2)
BA/BSc (Ed) Year 2	Semester 1 TW: 14 Aug 2017 – 08 Dec 2017 R : 30 Sep 2017 – 08 Oct 2017 V : 09 Dec 2017 – 14 Jan 2018 Semester 2 TW : 15 Jan 2018 – 11/25 May 2018@ R : 03 Mar 2018 – 11 Mar 2018 V : 12/26 May 2018 – 05 Aug 2018**	18 Nov 2017 – 08 Dec 2017 21 Apr 2018 – 11 May 2018	NIL 25 June – 27 July 2018 (5 weeks of Teaching Assistantship during the vacation before Year 3)
BA/BSc (Ed) Year 3	Semester 1 TW: 14 Aug 2017 – 08 Dec 2017 R : 30 Sep 2017 – 08 Oct 2017 V : 09 Dec 2017 – 14 Jan 2018 Semester 2 TW: 15 Jan 2018 – 11 May 2018 R : 03 Mar 2018 – 11 Mar 2018 V : 12 May 2018 – 05 Aug 2018**	18 Nov 2017 – 08 Dec 2017 21 Apr 2018 – 11 May 2018	NIL 25 June – 27 July 2018 (5 weeks of Teaching Practice 1 during the vacation before Year 4)
BA/BSc (Ed) Year 4	Semester 1 TW: 14 Aug 2017 – 08 Dec 2017 R : 30 Sep 2017 – 08 Oct 2017 V : 09 Dec 2017 – 14 Jan 2018 Semester 2 TW : 15 Jan 2018 – 25 May 2018 R : 17 Mar 2018 – 25 Mar 2018	18 Nov 2017 – 08 Dec 2017 21 Apr 2018 – 11 May 2018 14 May 2018 – 25 May 2018 (Beginning Teachers' Orientation Programme is compulsory)	NIL 26 February – 11 May 2018* (10 weeks of Teaching Practice 2)

If NTU recess falls within the Practicum period, that programme will follow the school's one-week break

+ Orientation includes Registration of Courses

** Practicum starts during vacation period

@ Student Teachers taking CS English Language but not doing English as AS will attend CELS sessions from 14 to 25 May 2018

	Dates of Orientation (O+) Teaching Weeks (TW) / Recess (R) / Vacation (V)	Dates of Revision / Examination / Compulsory Events	Dates of Practicum
PGDE (PE) Year 1 (Jul 2017 Intake)	Semester 1 O+ : 31 July 2017 – 04 Aug 2017 TW: 07 Aug 2017 – 17 Nov 2017 R : 30 Sep 2017 – 08 Oct 2017 V : 18 Nov 2017 – 03 Dec 2017 Semester 2 TW: 04 Dec 2017 – 01 Jun 2018 R : 23 Dec 2017 – 07 Jan 2018 V : 02 Jun 2018 – 05 Aug 2018**	-	NIL 25 June – 27 July 2018 (5 weeks of Teaching Practice 1 during the vacation before Year 2)
PGDE (PE) Year 2 (Jul 2016 Intake)	Semester 1 TW: 07 Aug 2017 – 08 Dec 2017 R : 30 Sep 2017 – 08 Oct 2017 V : 09 Dec 2017 – 14 Jan 2018 Semester 2 TW : 15 Jan 2018 – 25 May 2018 R : 17 Mar 2018 – 25 Mar 2018	- 14 May 2018 – 25 May 2018 (Beginning Teachers' Orientation Programme is compulsory)	NIL 26 February – 11 May 2018* (10 weeks of Teaching Practice 2)
PGDE (Pri/Sec/JC) (Dec 2016 Intake)	Semester 1 O+ : 05 Dec 2016 – 09 Dec 2016 TW: 12 Dec 2016 – 02 Jun 2017 R : 24 Dec 2016 – 01 Jan 2017 V : 03 Jun 2017 – 06 Aug 2017 Semester 2 TW: 07 Aug 2017 – 01 Dec 2017 R : 30 Sep 2017 – 08 Oct 2017 V : 02 Dec 2017 – 31 Dec 2017 Semester 1 TW: 01 Jan 2018 – 09 Mar 2018	27 May 2017 – 02 June 2017 11 Nov 2017 – 17 Nov 2017 08 March and 09 March 2018 (Beginning Teachers' Orientation Programme is compulsory)	27 March – 21 April 2017 (4 weeks of Teaching Assistantship) NIL 02 January – 07 March 2018 (10 weeks of Teaching Practice)
PGDE (Pri/Sec/JC) (Dec 2017 Intake)	Semester 1 O+ : 04 Dec 2017 – 08 Dec 2017 TW: 11 Dec 2017 – 01 Jun 2018 R : 23 Dec 2017 – 31 Dec 2017 V : 02 Jun 2018 – 05 Aug 2018 Semester 2 TW: 06 Aug 2018 – 30 Nov 2018 R : 29 Sep 2018 – 07 Oct 2018 V : 01 Dec 2018 – 30 Dec 2018 Semester 1 TW: 31 Dec 2018 – 15 Mar 2019	26 May 2018 – 01 June 2018 10 Nov 2018 – 16 Nov 2018 14 March and 15 March 2019 (Beginning Teachers' Orientation Programme is compulsory)	26 March – 20 April 2018 (4 weeks of Teaching Assistantship) NIL 07 January – 13 March 2019 (10 weeks of Teaching Practice)

* If NTU recess falls within the Practicum period, that programme will follow the school's one-week break

+ Orientation includes Registration of Courses

** Practicum starts during vacation period

Procedures for Application

Applications for admission to the programmes leading to the Bachelor of Arts (Education) and Bachelor of Science (Education) must be submitted online through the Nanyang Technological University website at <http://www.ntu.edu.sg> and through the Ministry of Education website at <http://www.moe.gov.sg/careers/teach>. For polytechnic diploma holders, the admission exercise is normally held in February while in the case of GCE 'A' level holders, the admission exercise is normally held in March. The programme commences in August each year.

Applications by university degree holders for admission to the programme leading to the Postgraduate Diploma in Education and applications by GCE 'A' Level or Polytechnic Diploma holders for admission to the programmes leading to the Diploma in Education, Diploma in Physical Education, and Diploma in Art/Music Education can be made by applying online through the MOE website at <http://www.moe.gov.sg/careers/teach> for those seeking sponsorship from the Ministry of Education. To find out more about the application periods, please visit <http://www.moe.gov.sg/careers/teach> for more information.

Applications by GCE 'O' Level holders for the one-year Diploma in Art/Music/Home Economics Education and Diploma in Education (Chinese Language) Programmes must be applied online through the MOE website at <http://www.moe.gov.sg/careers/teach> during the annual recruitment exercise. Applications for these programmes are normally invited in January/February each year.

The Diploma in Special Education Programme is attended by nominated teachers of special education organisations and Allied Educators (Learning & Behavioural Support) of the Ministry of Education.

For the Bachelor of Arts (Education), Bachelor of Science (Education), Postgraduate Diploma in Education, Diploma in Education and Diploma in Special Education Programmes, apart

from admission under sponsorship by the Ministry of Education, applications may also be considered under the full-fee paying scheme. Details on this scheme and the application can be obtained from <http://www.nie.edu.sg/teacher-education/admissions>. Applications normally open from mid-January to mid-March.

Trained non-graduate teachers who are interested in pursuing a degree programme can apply for admission to the full-time Bachelor of Arts (Education)/Bachelor of Science (Education) Programme. Applications normally open from mid-February to mid-March. During the admission exercise, details can be obtained from <http://www.nie.edu.sg/teacher-education/undergraduate-programmes>.

Applications for admission to the programmes leading to the degrees of Master's by coursework in the various disciplines must be made through the online application system in the NIE website at www.nie.edu.sg/gpl/appl_course.htm. There are generally two intakes a year (January and August). You are advised to visit the website and look out for NIE's announcements in May-June and November-December to confirm if the programmes will be open for application at any particular intake. For more details on the programmes, please visit the website at www.nie.edu.sg/gpl/hd.

For admission to the research degree programmes such as Doctor of Philosophy, Master of Arts and Master of Science, applications must be made through the online application system in the NIE website at www.nie.edu.sg/gpl/appl_research.htm. There are two intakes a year (January and August). You are advised to visit the website and look out for NIE's announcements in May and October to confirm if the programmes will be open for application at any particular intake. For more details on the programmes, please visit the website at www.nie.edu.sg/gpl/hd.

The Doctor in Education programme is available for the January intake. Applications may be made online. You are advised to visit the website and look out for NIE's announcement in April-May to confirm if the programme will be open for application at any particular

intake. For more details on the programme, please visit <http://www.nie.edu.sg/higher-degrees/doctor-in-education-edd/>.

Details of the programmes and entry requirements pertaining to the programmes mentioned in this section are available in handbooks published separately.

NO STUDENT MAY PURSUE CONCURRENTLY ANY PROGRAMME OF STUDY AT ANOTHER INSTITUTION OF LEARNING WHEN ENROLLED AS A STUDENT AT THIS INSTITUTE.

Tuition Fees & Tuition Grants for MOE-Sponsored Candidates

A) Subsidised Tuition Fees and Tuition Grants for MOE-Sponsored Full-time Candidates in Academic Year 2017/2018

For candidates who join the programmes in Academic Year **2017/2018**, the subsidised tuition fee payable and tuition grant per annum are as follow:

Programme	Subsidised Tuition Fee	Tuition Grant
	\$	\$
Bachelor of Arts (Education)*^		
(i) Singapore Citizen	8,150.00	19,900.00
(ii) Singapore Permanent Resident	11,400.00	16,650.00
(iii) International Student	16,308.40	11,740.00
Bachelor of Science (Education)*^		
(i) Singapore Citizen	8,150.00	28,200.00
(ii) Singapore Permanent Resident	11,400.00	24,950.00
(iii) International Student	16,308.40	20,040.00
Postgraduate Diploma in Education*^	1,080.00	-
Postgraduate Diploma in Education (Physical Education)*^	540.00	-
Diploma in Home Economics Education (Home Economics Teacher Training Scheme)*^	1,080.00	-
Diploma in Art/Music/Chinese Language Education (1 year programme)*^	1,080.00	-
Diploma in Art/Music Education (2 years programme)*^	540.00	-

Diploma in Education*^	540.00	-
Diploma in Physical Education*^	540.00	-

* The figures provided are exclusive of GST.

^ Tuition fees and grants quoted are subject to change.

In addition to the subsidised tuition fee payable (as indicated in the above table), the other fees payable are as follows:

Other Fees*	\$
Singapore Citizens	
- Health Service Fee	64.80
- Student Service Fee (Non-Lab-based & Non-PE)	187.45
- Student Service Fee (Lab-based & PE)	219.55
Non-Lab-based Programmes (Total)	252.25
Lab-based Programmes (Total)	284.35
Singapore Permanent Residents/ International Students	
- Health Service Fee	145.80
- Student Service Fee (Non-Lab-based & Non-PE)	187.45
- Student Service Fee (Lab-based & PE)	219.55
Non-Lab-based Programmes (Total)	333.25
Lab-based Programmes (Total)	365.35

* The figures given above are GST inclusive and subjected to change.

MOE-Sponsored Candidates

For those candidates who are sponsored by MOE, the subsidised tuition fee and other fees (except for Student Health Service Fee and Group Hospitalisation and Surgical Insurance Fee) will be borne by MOE. Candidates will need to pay the Student Health Service Fee of \$53.50 (inclusive of GST) per annum. In addition to the Student Health Service Fee, Singapore Permanent Residents and International Students will need to pay the Group Hospitalisation and Surgical Insurance Fee of \$81.00 (inclusive of GST) per annum.

MOE may withdraw payment of the tuition fees and other fees on candidates' behalf if they do not perform well in their studies.

B) Rules on Payment of Fees

- 1 The Institute reserves the right to alter fees at any time.
- 2 Fees are payable in two instalments each year, at the beginning of Semesters I and II.
- 3 Fees must be paid during the period specified. No candidate shall be entitled to be admitted to an Institute examination unless the Head of Finance certifies that he is not in debt to the Institute (otherwise than as a result of a loan made by the Institute/University) or to any University hall of residence.
- 4 A candidate who leaves the Institute after two weeks from the start of a semester is liable for the payment of fees.
- 5 Apart from the scheduled fees indicated above, candidates may be requested from time to time to make payments for various activities conducted and materials used during their programmes. All fees quoted are subject to revision.

C) Instructions for payment of fees to the National Institute of Education

Payment can be made by using any of the following modes of payment.

1) Cheque Payment

Cheques should be crossed and made payable to “National Institute of Education”. Post dated cheques are not acceptable. Please send cheque to:

National Institute of Education
1, Nanyang Walk,
Finance Dept, Admin Building, Level 2
Singapore 637616.

2) NETS, Cash or Credit Card Payment

NETS, cash or credit card payment (VISA and MasterCard only, subject to a minimum payment of \$30) can be made at NIE Student Services Centre, Block 3B, NIE Student Hub, Level 1. The opening hours for NIE Student Services Centre are as follows:

Mon to Thurs: 9:00 am to 5 pm
Fri: 9:00 am to 4.30 pm.

3) Telegraphic Transfer

a) For telegraphic transfer, please transfer fund to

Account Name:	National Institute of Education
Bank:	Hongkong & Shanghai Banking Corporation
Address:	21 Collyer Quay #09-01 HSBC Building Singapore 049320
Account code:	143-011617-001
Swift BIC:	HSBCSGSGXXX
Fax:	(65) 68340503
Tel:	(65) 67315133

b) All payment must be made in Singapore dollars.

c) Please note that payee is to bear all overseas remittance charges, including that of the Institute's charges.

d) Please quote the tax invoice number in the telegraphic transfer form.

Tuition Fees & Other Miscellaneous Fees for Full-Fee Paying Candidates

A) Tuition Fees & Other Miscellaneous Fees for Full-Fee Paying Full-time Candidates in Academic Year 2017/2018

For full-fee paying candidates who join the programmes in **Academic Year 2017/2018**, the full tuition fees payable per annum are as follow:

Programme*	All Full Fee paying candidate
Bachelor of Arts (Education)	S\$29,700.93
Bachelor of Science (Education)	S\$29,700.93
Postgraduate Diploma in Education	S\$22,780.00
Postgraduate Diploma in Education (Physical Education)	S\$22,240.00
Diploma in Education	S\$22,240.00
Diploma in Art/Music Education	S\$22,240.00
Diploma in Physical Education	S\$22,240.00
Diploma in Home Econ/Art/Music/Chinese Language Education (1 year programme)	S\$22,780.00

* The figures given above are GST exclusive and subjected to change.

Fees

The tuition fees as well as other fees payable are shown below.

Postgraduate Diploma in Education Postgraduate Diploma in Education (Physical Education)

Fees*	PGDE	PGDE (PE)
Direct Tuition Fee per annum	S\$24,374.60	S\$23,796.80
Other Fees		
Singapore Citizens		
- Health Service Fee	S\$64.80	S\$64.80
- Student Service Fee	S\$187.45	S\$219.55
Total for Singapore Citizens	S\$252.25	S\$284.35
Singapore Permanent Residents/ International Students		
- Health Service Fee	S\$145.80	S\$145.80
- Student Service Fee	S\$187.45	S\$219.55
Total for Singapore Permanent Residents/ International Students	S\$333.25	S\$365.35

** The figures given above are GST inclusive and subjected to change.*

**Diploma in Education
Diploma in Art/Music Education
Diploma in Physical Education**

Fees*	Dip Ed, Dip Art Ed, Dip Music Ed	Dip PE
Direct Tuition Fee* per annum	S\$23,796.80	S\$23,796.80
Other Fees		
Singapore Citizens		
- Health Service Fee	S\$64.80	S\$64.80
- Student Service Fee	S\$187.45	S\$219.55
Total for Singapore Citizens	S\$252.25	S\$284.35
Singapore Permanent Residents/ International Students		
- Health Service Fee	S\$145.80	S\$145.80
- Student Service Fee	S\$187.45	S\$219.55
Total for Singapore Permanent Residents/ International Students	S\$333.25	S\$365.35

** The figures given above are GST inclusive and subjected to change.*

Diploma in Home Econ/Art/Music/Chinese Language Education (1 year programme)

Fees*	All Full Fee paying candidate
Direct Tuition Fee per annum	S\$24,374.60
Other Fees	
Singapore Citizens	
- Health Service Fee	S\$64.80
- Student Service Fee	S\$187.45
Total for Singapore Citizens	S\$252.25
Singapore Permanent Residents/ International Students	
- Health Service Fee	S\$145.80
- Student Service Fee	S\$187.45
Total for Singapore Permanent Residents/ International Students	S\$333.25

* The figures given above are GST inclusive and subjected to change.

Bachelor of Arts (Education) (Full-time)
Bachelor of Science (Education) (Full-time)

Fees*	BA(Ed)	BSc(Ed)
Direct Tuition Fee per annum	S\$31,780.00	S\$31,780.00
Other Fees		
Singapore Citizens		
- Health Service Fee	S\$64.80	S\$64.80
- Student Service Fee	S\$187.45	S\$219.55
Total for Singapore Citizens	S\$252.25	S\$284.35
Singapore Permanent Residents/ International Students		
- Health Service Fee	S\$145.80	S\$145.80
- Student Service Fee	S\$187.45	S\$219.55
Total for Singapore Permanent Residents/ International Students	S\$333.25	S\$365.35

* The figures given above are GST inclusive and subjected to change.

B) Rules on Payment of Fees

- 1 The Institute reserves the right to alter fees at any time.
- 2 Fees are payable either in full on a per annum basis or in two instalments each year, at the beginning of Semesters I and II.
- 3 Fees must be paid during the period specified. No candidate shall be entitled to be admitted to an Institute examination unless the Head of Finance certifies that he is not in debt to the Institute (otherwise than as a result of a loan made by the Institute/University) or to any University hall of residence.
- 4 A candidate who leaves the Institute after two weeks from the start of a semester is liable for the payment of fees.
- 5 Apart from the scheduled fees indicated above, candidates may be requested from time to time to make payments for various activities conducted and materials used during their programmes. All fees quoted are subject to revision.

C) Instructions for payment of fees to the National Institute of Education

Payment can be made by using any of the following modes of payment.

1) Cheque Payment

Cheques should be crossed and made payable to “National Institute of Education”. Post dated cheques are not acceptable. Please send cheque to:

National Institute of Education
1, Nanyang Walk,
Finance Dept, Admin Building, Level 2
Singapore 637616.

2) NETS, Cash or Credit Card Payment

NETS, cash or credit card payment (VISA and MasterCard only, subject to a minimum payment of \$30) can be made at NIE Student Services Centre, Blk 3B, NIE Student Hub, Level 1. The opening hours for NIE Student Services Centre are as follows:

Mon to Thurs: 9:00 am to 5 pm
Fri: 9:00 am to 4.30 pm.

3) Telegraphic Transfer

a) For telegraphic transfer, please transfer fund to

Account Name:	National Institute of Education
Bank:	Hongkong & Shanghai Banking Corporation
Address:	21 Collyer Quay #09-01 HSBC Building Singapore 049320
Account code:	143-011617-001
Swift BIC:	HSBCSGSGXXX
Fax:	(65) 68340503
Tel:	(65) 67315133

b) All payment must be made in Singapore dollars.

c) Please note that payee is to bear all overseas remittance charges, including that of the Institute's charges.

d) Please quote the tax invoice number in the telegraphic transfer form.

Leave of Absence and Medical/Dental Claims

Leave of Absence

Student teachers who cannot attend classes for any good reasons must apply for leave of absence. Those who absent themselves without approval or medical certificate issued by a medical practitioner in Singapore may be subject to disciplinary action being taken against them. This may lead to termination of service for errant offenders.

It is the onus of student teachers to contact their lecturers to explain the reasons for their absence not later than two working days from the date of absence. Those who fail to do so will be issued with a notice of absence letter. The penalty for unauthorized absence would range from withdrawal of salary, withholdment of increment, suspension or discontinuation of payment of benefits or termination of service. Where the absence is due to medical leave, student teachers are required to produce medical certificates issued by medical practitioners registered under the Medical Registration Act.

Student teachers are required to show the **original** medical certificate to the lecturers concerned before submitting it to the Student Services Centre (Student Hub, Level 1). The deadline for submission is 2 weeks from the date of issue of the medical certificate. Beyond this deadline, if the original medical certificate has not been shown to the lecturer, a notice of absence letter will be issued.

Applications for leave must be made on the appropriate leave application forms which can be obtained from the NIE Portal at <http://portal.nie.edu.sg> under 'Student Services'. Applications for leave of absence must be submitted to MOE through NIE at least seven days in advance. A drop box for leave applications is located at the NIE SSC. Where the leave is for the purpose of participating in competitions, the application should be submitted at least six weeks in advance to allow for processing. Student teachers should not go

on leave until approval has been obtained. Late leave applications will not be considered.

Student teachers may go overseas during public holidays, weekends and the NIE vacation as long as there are no programme commitments to fulfill during the period concerned. They are required to attend the compulsory Teachers Preparation Enhancement Programme (TPEP) after completing the July Semester and the compulsory beginning teachers' orientation programmes after their Final Practicum. They will then assume teaching duties in the posted school immediately after or the following week.

Maternity Leave

Female student teachers who are likely to be on maternity leave (including extended maternity leave) in the first semester of the programme should inform the National Institute of Education and the Ministry of Education before the commencement of the programme. During the course of study, female student teachers who are likely to be on maternity leave during semester time are advised to consult their course lecturers on the implications of their absence and Manager/Admissions and Student Records at the Office of Academic Administration and Services at least 1 month prior to the expected commencement of leave. Student teachers may be allowed a maximum of 28 days maternity leave during semester time if there are at least 13 teaching weeks in that semester. If maternity leave takes place during a semester that has less teaching weeks, student teachers may face a higher risk of not being able to fulfill their programme commitments and as a result, may have to extend their programme of study beyond the normal duration at their own cost. Student teachers who are on maternity leave during Practicum will have to extend their period of Practicum accordingly at their own cost.

Medical and Dental Claims

Student teachers who are receiving monthly salary from the Ministry of Education are eligible for medical and dental benefits under the Medisave-cum-Subsidised Outpatient (MSO) Medical Benefits Scheme. These benefits are not applicable to those on no-pay leave and full-fee paying students. For those who are eligible, the claims can be made online through the Pac@Gov at <https://pacgov.agd.gov.sg/ipac/portal/jsp/login/index1.jsp>. The claims have to be made within 1 month of the receipt of the medical or dental treatment. Please retain the receipts for 2 months and if you are prompted by the system to submit the receipts, please submit them to PAC for verification at:

MOE Building
8th Floor, Vital.Org (Payroll and Claims)
1 North Buona Vista Drive, Singapore 138675

(wef 21 Mar 2014)

The officer-in-charge at the Ministry of Education is Ms Hannah Ow.

Academic Warning, Probation and Termination

Student teachers, whose work is unsatisfactory, may be given a series of warnings by NIE. The following indicates 3 categories of warnings in ascending order of severity and the consequences:

Type of Warning	Criteria
Unsatisfactory Performance	Maintain a minimum CGPA of 2.00 and completing less than 75% of the normal Academic Unit workload
Academic Warning	Obtain a CGPA of less than 2.00 for any given semester
Academic Probation	Obtain a CGPA of less than 2.00 for the following semester
Academic Termination	Obtain a CGPA of less than 2.00 for the 3 rd consecutive semester, or at the end of the final semester of study.

Academic Integrity

The Institute advises all student teachers to respect all copyrighted works and encourages the purchase of original textbooks and/or other copyrighted materials that are required for their programme of study. Student teachers should not plagiarise or pass off as their own, the writing or ideas of another, without acknowledging or crediting the source from which the ideas are taken.

The Institute takes a serious view of any form of plagiarism and infringement of copyright by student teachers. A contravention of the provisions of the Copyright Act is deemed to be a breach of the Institute's rules and regulations, which could result in disciplinary action. Cheating, plagiarism and other forms of academic dishonesty are considered serious offences for which disciplinary penalties will be imposed.

Please refer to the NIE Academic Integrity Framework available on the NIE Portal for more details.

Copyright and You

What is Copyright?

Copyright is an intellectual property right recognised and protected by law. In Singapore this is essentially covered under the Copyright Act (Cap. 63).

Copyright exists in all forms of works, such as books, periodicals, magazines, compilations of information, photographs, diagrams, dances, scripts for plays, computer programs, drawings, sculpture, musical scores, lyrics, sound recordings, cinematographic films, television broadcasts, sound recordings and cable programme etc.

Who Owns Copyright and What Does It Entitle?

Generally, the author of a literary, dramatic, musical or artistic work is the owner of the copyright.

In the case of other forms of copyrighted materials etc., sound recordings and films, the producer is the copyright owner, although in both cases, these rights could be subject to assignments.

The owner of a copyrighted work has monopoly rights to reproduce, publish, perform or broadcast the work. It is an infringement of such rights for any other person to do such acts without the consent of the copyright owner.

Where a student photocopies an entire or substantial portion of a book he would have infringed copyright. In the context of students in Singapore, this is the most frequent type of copyright infringement. It is also an infringement to authorise others to infringe copyright. To illustrate the latter, if you take a book to a photocopying shop and request for a copy of the book, you as the person who authorises the copying are liable for copyright infringement even though the shop does the actual photocopying.

What Are The Consequences of Copyright Infringement?

A person found guilty of copyright infringement could be liable for civil and criminal sanctions depending on the nature of the offending acts.

Civil liabilities include an order by the Court for the infringer to pay the copyright owner compensation in the form of monetary damages. If you have made any profit from the infringing acts, you could be made to pay all profits you may have made. The copyright owner would probably also obtain an injunction to prevent further infringement.

Criminal sanctions may be very serious. A person in the possessions of 5 or more infringing copies of any work is presumed to be in possession of the same for sale. The statutory penalties for copyright infringement for the purpose of sale are a fine of \$10,000/- for each infringing copy or \$100,000/- per charge. The Court may also impose a term of imprisonment not exceeding 5 years.

In both cases, the Court may also order that all infringing copies or any article predominantly used for making infringing copies be either destroyed or surrendered to the owner.

Is Any Copying Permitted?

Yes, the law provides certain exceptions when which copying is not considered infringement.

Copying of works in the following instances will not constitute infringement:-

1. You are deemed to have copied for the purpose of self-study or research and therefore not infringed copyright if:-
 - (a) you copy one article in a periodical publication;
 - (b) where a literary, dramatic or musical work is in a published edition of:

- at least 10 pages divided into chapters, you copy not more than 10% of the total number of pages; or not more than one chapter, whichever is greater.
- at least 10 pages but not divided in chapters, you copy not more than 10% of the total number of pages.

(c) where a literary, dramatic or musical work is an edition stored on an electronic medium and is not divided into pages, you copy:

- not more than 10% of the total number of bytes in the edition; or
- not more than 10% of the total number of words in that edition; or
- not more than 10% of the contents of that edition.

(d) where a literary, dramatic or musical work is an edition stored on an electronic medium and is divided into chapters, you copy:

- not more than 10% of the total number of bytes in the edition; or
- not more than 10% of the total number of words in that edition; or
- not more than 10% of the contents of that edition, but contains only the whole or part of a single chapter of the work.

2. If you copy in excess of the above limits, you will be deemed not to have copied for the purpose of self-study or research. You will then have the burden of proving that your copying constitutes a fair dealing of the work. The factors to be considered are:-

(i) the purpose and character of the dealing, including whether such dealing is of a commercial nature or is for non-profit educational purpose;

- (ii) the nature of the work or adaptation;
 - (iii) the amount and substantiality of the part copied taken in relation to the whole work or adaptation;
 - (iv) the effect of the dealing upon the potential market for, or value of, the work or adaptation; and
 - (v) the possibility of obtaining the work or adaptation within a reasonable time at an ordinary commercial price.
3. The making of a copy of a computer program is not copyright infringement if the reproduction is made on behalf of the owner and the reproduction is for the purpose of being used as a back-up copy of the original computer program.
 4. Subject to certain qualifications specified in the Copyright Act, you will not infringe copyright in an audio-visual work (such as sound recording, cinematograph film, sound broadcast, television broadcast or cable programme) if the copying was for research or private study.
 5. You may copy a film or recording of television or sound broadcast or cable programmes provided that such copy is made for private and domestic use. If the film or recording is seen or heard in public, it shall be deemed to be made not for private and domestic use.
 6. You may copy a work after the copyright in the work ceases to subsist.

How Long Does Copyright Subsist?

Literary, dramatic, musical, artistic works	70 years from the end of the year in which the author died. If the work is published after the death of the author, it lasts for 70 years from the end of the year in which the work was first published.
Published editions of literary, dramatic, musical or artistic works (layout)	25 years from the end of the year in which the edition was first published.
Sound recordings and films	70 years from the end of the year of release of the sound recording or film.
Broadcasts and cable programmes	50 years from the end of the year of making the broadcast or cable programme.
Performances	70 years from the end of the year of the performance.

Conclusion

The University takes a serious view of any infringement of copyright by students and a contravention of the provisions of the Copyright Act is deemed to be a breach of the University's rules and regulations, which could result in disciplinary action.

The University advises all students to respect the copyright of all copyright owners' works and encourages the purchase of original textbooks and/or other copyrighted materials that are required for your courses of study. The cost of these materials is insignificant compared to the penalties for copyright infringement.

Code of Conduct and Dress Code for Student Teachers on Campus

NIE aims to cultivate a positive teacher culture among its student teachers so that they may develop into cultured teachers. A cultured teacher is one who is; neat and professional looking, confident, caring, creative, and a mentor, learner and leader.

As part of the desire to project a positive total image of teachers, a code of conduct and dress code for student teachers on campus has been established and student teachers are expected to observe the code.

Code of Conduct:

1. Aim to be good role models.
2. Treat all individuals with respect.
3. Uphold moral integrity and be truthful in your conduct.
4. Show compassion and display humanity at all times.
5. Use appropriate communication channels and language in expressing opinions and giving feedback.
6. Practise responsible behaviour in all social media platforms.

Dress Code:

<i>Unacceptable Attire for Males</i>	<i>Unacceptable Attire for Females</i>
<ol style="list-style-type: none">1. Face covering that prevents ready identification of the wearer2. Vulgarities, obscenities or offensive prints on T-shirts3. Translucent or body hugging T-shirts4. Singlets5. Sleeveless T-shirts6. Torn jeans7. Shorts	<ol style="list-style-type: none">1. Face covering that prevents ready identification of the wearer2. Vulgarities, obscenities or offensive prints on T-shirts/ blouses3. Translucent or body hugging outfits4. Provocative & revealing attire (e.g. exposed midriffs, bare backs, spaghetti straps, tubes, tank-tops)5. Torn jeans6. Shorts7. Hipsters and skin-fit bottoms8. Skirts shorter than 4 fingers above the knees

<i>Unacceptable Hair/Accessories for Males</i>	<i>Unacceptable Hair/Accessories for Females</i>
<ol style="list-style-type: none"> 1. Unnatural hair colour 2. Hair covering ears, eyebrows or shirt collars 3. Multiple ear-studs/earrings 4. Body piercing 	<ol style="list-style-type: none"> 1. Unnatural hair colour 2. Multiple ear-studs/earrings 3. Body piercing
<i>Unacceptable Footwear for Males</i>	<i>Unacceptable Footwear for Females</i>
<ol style="list-style-type: none"> 1. Footwear without heel straps (e.g. slippers) 	<ol style="list-style-type: none"> 1. Footwear without heel straps (e.g. slippers)
<i>Attire for PE Student Teachers</i>	
<i>Acceptable</i>	
<ol style="list-style-type: none"> 1. PESS (Hanes) T-shirts or PESS/NIE event T-shirts (biathlon, netball carnival, etc.) 2. Sports brand T-shirts & collared shirts 3. Bermudas / track pants / shorts at knee length 4. Appropriate attire for respective sports courses 	
<i>Unacceptable</i>	
<ol style="list-style-type: none"> 1. Face covering that prevents ready identification of the wearer 	

2. Printed T-shirts (of cartoons, advertisements or external events / organisations)
3. Translucent, body-hugging tops / spaghetti straps / midriff-baring tops for ladies
4. Singlets / sleeveless T-shirts
5. Torn jeans
6. Running shorts or short shorts
7. Cargo or beach shorts / three-quarter pants
8. Skirts shorter than 4 fingers above the knees

Unacceptable Hair/Accessories

1. Unnatural hair colour
2. Hair covering ears, eyebrows or shirt collars (for males)
3. Multiple ear-studs/earrings
4. Body piercing

Acceptable Footwear

1. Sports shoes with socks
2. Sports sandals for theory classes only (heel straps must be properly worn at ALL times)

Unacceptable Footwear

1. Slippers

Financial Assistance Schemes

Loans and Bursaries Administered by NTU Office of Admissions and Financial Aid

BA/BSc (Ed) student teachers are eligible for Overseas Study Programme (OSP), Student and PC Loan.

To be eligible to apply for a bursary, student teachers must not be receiving salary or stipend from MOE or paying non-subsidised tuition fees.

Please refer to

<http://admissions.ntu.edu.sg/UndergraduateAdmissions/FinancialAssistance/Pages/default.aspx> for details.

Schemes Administered by NIE Finance Department

Needy BA/BSc student teachers who do not receive salary, stipend and whose fees are not paid by MOE may apply for any of the following to fund their tuition fees:

- a) Tuition Fee Loan – submit directly to the agent banks appointed by NTU
- b) CPF Education Scheme – submit to NIE Student Services Centre at Student Hub, Level 1
- c) Mendaki Tertiary Tuition Fee Subsidy – submit to NIE Student Services Centre at Student Hub, Level 1.

Full fee paying student teachers and part-time student teachers are not eligible for these schemes.

Student teachers can refer to the NIE Portal (<http://portal.nie.edu.sg/>) for details. More information on the Tuition Fee Loan from agent banks appointed by NTU can be

obtained at: <http://www.nie.edu.sg/student-services-centre/financial-aid>.

More information on the CPF Education Scheme can be obtained at: http://mycpf.cpf.gov.sg/Members/Gen-Info/Features/CPFEdn_Scheme.htm.

More information on the Mendaki Tertiary Tuition Fee Subsidy can be obtained at <http://www.mendaki.org.sg>.

Prizes and Awards

Awards for outstanding performance in Initial Teacher Preparation Programmes:

No.	Name of Award	Type/Value	Criteria for Award
1	The NIE Award	Each award comprises a Certificate of Recognition and cash prize of \$300	<p>Award presented to student teachers who have excelled in academic studies and service to the Institute's community. One award is presented to the awardee of the following initial teacher preparation programmes at each Teachers' Investiture Ceremony:</p> <p>Postgraduate Diploma in Education Diplomas Bachelor of Arts (Education) or Bachelor of Science (Education)</p>
2	Rotary International 75th Anniversary Gold Medals	3 Gold Medals	<p>The medals are awarded to student teachers of the following programmes on the basis of excelling in the final examination and of their outstanding leadership and dedication to student activities in the Institute or services to the community:</p> <p>Postgraduate Diploma in Education Degree Diploma</p>

Awards for outstanding performance in Bachelor of Arts/Science (Education) Programmes:

No.	Subject	Name of Award	Type/Value	Criteria for Award
1	General	Lee Kuan Yew Gold Medals	2 Gold Medals	<p>The medals are awarded to the student teachers who are first in general proficiency throughout their programme of study and who have obtained a First Class Honours in the following degrees:</p> <p>Bachelor of Arts (Education) Bachelor of Science (Education)</p>
2	General	Sng Yew Chong Award	1 Gold Medal and \$600 Cash Prize	<p>The medal and \$600 cash prize are awarded to the best student teacher in the Bachelor of Science (Education). The recipient must have obtained the degree with at least an Honours classification.</p>
3	Art	The Art Book Prize	Book Prize of \$400	<p>The prize is awarded to the best student teacher in Art in the programme leading to the degree of Bachelor of Arts (Education).</p>
4	Biology	Economic Development Board Book Prize	Book Prize of \$300	<p>The prize is awarded to the best student teacher in Biology in the final year of the programme leading to the degree of Bachelor of Science (Education).</p>
5	Biology	The Singapore Institute of Biology Book Prize	Book Prize of \$200	<p>The prize is awarded to the best student teacher with the best aggregate results in the Biology courses leading to the degree of Bachelor of Science (Education). The recipient must also excel in the research course (minimum B grade) that is compulsory in the fourth year of the programme.</p>

No.	Subject	Name of Award	Type/Value	Criteria for Award
6	Chinese Language & Literature	Dr Wu Teh Yao Book Prize	Book Prize of \$400	The prize is awarded to the student teacher in the Bachelor of Arts (Education) (Chinese Specialisation) who has obtained at least a Credit for final Teaching Practicum and has the best overall results in all Chinese courses.
7	English Language	The Victor Neo Book Prize	Book Prize of \$400	The prize is awarded to the best student teacher in English Language in the programme leading to the degree of Bachelor of Arts (Education).
8	English Literature	The British Council Book Prize	Cash Price of \$400	The prize is awarded to the best overall student teacher in English Literature in the programme leading to the degree of Bachelor of Arts (Education).
9	Geography	Pacific Andes Book Prize	Book Prize of \$400	The prize is awarded to the final year student teacher with the best aggregate results in the Geography courses and has obtained at least a Credit in the final Teaching Practicum of the Bachelor of Arts (Education).
10	History	The Jurong Shipyard Book Prize	Book Prize of \$400	The prize is awarded to a final year student teacher who has the best overall performance in history courses during the four years of study in the degree of Bachelor of Arts (Education) programme. The recipient must also obtain a Credit in the final Teaching Practicum.
11	Malay Language & Literature	Singapore Malay Teachers Cooperative Ltd Book Prize	Book Prize of \$300	The prize is awarded to the student teacher in the Bachelor of Arts (Education) (Malay Language and Literature Specialisation) who has obtained at least a Credit for final Teaching Practicum and has the best overall results in all Malay courses.

No.	Subject	Name of Award	Type/Value	Criteria for Award
12	Mathematics	Association of Mathematics Educators Book Prize	Book Prize of \$300	The prize is awarded to the best student teacher in the Teaching of Mathematics in the programme leading to the degree of Bachelor of Arts (Education) or Bachelor of Science (Education).
13	Mathematics	Singapore Mathematical Society Book Prize	Book Prize of \$500	The prize is awarded to the best student teacher in Mathematics in the Bachelor of Science (Education) (Secondary) programme.
14	Mathematics	Southeast Asian Mathematical Society Book Prize	Book Prize of \$250	The prize is awarded to the best student teacher in all Mathematics courses in the Bachelor of Science (Education) (Primary) programme.
15	Mathematics	The Mathematics Book Prize	Book Prize of \$400	The prize is awarded to the best student teacher in the Academic Subject: Mathematics in the programme leading to the honours degree of Bachelor of Science (Education).
16	Music	The Association of Nanyang University Graduates Book Prize	Book Prize of \$400	The prize is awarded to the best student teacher in Music in the programme leading to the degree of Bachelor of Arts (Education).
17	Music	Mrs Paul Feng Pei-Djen Book Prize	Book Prize of \$400	The prize is awarded to the best student teacher in either the Performance Studies course or the Conducting project course of the subject Music in the final year of the programme leading to the undergraduate degree offered in NIE.
18	Physical Education	Singapore National Olympic Council Book Prize	Book Prize of \$300	The prize is awarded to the best student teacher in Physical Education (specialising in Sports Studies track) in the second to fourth years of the programme leading to the degree of Bachelor of Science (Education).

No.	Subject	Name of Award	Type/Value	Criteria for Award
19	Physical Education	Singapore National Olympic Council Book Prize	Book Prize of \$300	The prize is awarded to the student teacher in Physical Education in the programme leading to the degree of Bachelor of Science (Education), who has the best score for instructional (pedagogy) courses with a 'Distinction' grade for final practicum.
20	Physical Education	Sport Science Book Prize	Book Prize of \$300	The prize is awarded to the best student teacher in Physical Education (specialising in Sports Science track) in the second to fourth years of the programme leading to the degree of Bachelor of Science (Education).
21	Physical Education	Sport Science Book Prize	Book Prize of \$300	The prize is awarded to the student teacher in Physical Education in the programme leading to the degree of Bachelor of Science (Education), who has the best all-round score for all Curriculum Studies (sports and games) courses in the four years.
22	Practicum	Tan Poey Quee Practicum Book Prize	Book Prize of \$500	The award is presented to the best student teacher in the Teaching Practicum. The recipient must have obtained a Distinction in Practicum.
23	Social Studies	SPC Book Prize	Book Prize of \$250	The prize is awarded to the best overall student teacher in Primary Social Studies in the final year of the programme leading to the degree of Bachelor of Arts (Education) or Bachelor of Science (Education).

Awards for outstanding performance in Diploma Programmes:

No.	Subject	Name of Award	Type/Value	Criteria for Award
1	Art	Yu She Yuen Book Prize	Book Prize of \$400	The prize is awarded to the best student teacher in the subject The Teaching of Art in the final year of the programme leading to the Diploma in Education (Secondary) or Diploma in Art Education.
2	Malay	Singapore Malay Teachers' Union Book Prize	Book Prize of \$300	The prize is awarded to the best student teacher in the Diploma in Education (Primary or Secondary) (Malay Specialisation) programme.
3	Mathematics	Beng Kim Holdings Book Prizes	2 Book Prizes of \$150 each	One prize is awarded to the best student teacher in the Subject Knowledge courses in Mathematics and the other to the best student teacher in the Curriculum Studies Teaching of Mathematics for the Diploma in Education or Diploma in Physical Education programme.
4	Practicum	Tan Poey Quee Practicum Book Prize	Book Prize of \$500	The award is presented to the best student teacher in the Teaching Practicum. The recipient must have obtained a Distinction in Practicum.
5	Social Studies	SPC Book Prize	Book Prize of \$250	The prize is awarded to the best overall student teacher in Primary Social Studies in the final year of the Diploma in Education programme.
6	Tamil	Singapore Tamil Teachers' Union Book Prize	Book Prize of \$300	The prize is awarded to the final year student teacher who has the best overall results in all Tamil courses and has obtained at least a Credit in the Teaching Practicum in the Diploma in Education (Tamil Specialisation) programme.

Awards for outstanding performance in Postgraduate Diploma in Education Programmes:

No.	Subject	Name of Award	Type/Value	Criteria for Award
1	General	NIE Gold Medal	Each award comprises a Gold Medal and cash prize of \$600	The awards are presented to the best student teacher in each graduating cohort and who has obtained at least a Credit in the Teaching Practicum, for the following programmes: Postgraduate Diploma in Education (Primary) Postgraduate Diploma in Education (Secondary / Junior College)
2	Accounting or Elements of Business Skills	LCCI Prize	2 Cash Prizes of \$600 each	The prizes are awarded to the best graduating student teachers in the Teaching of Accounting and / or in the Teaching of Elements of Business Skills for the January and/or July intakes in the programme leading to the Postgraduate Diploma in Education (Secondary/Junior College) and has obtained at least a Credit in the Teaching Practicum.
3	Chinese	Singapore Chinese Teachers' Union Book Prize	Book Prize of \$400	The prize is awarded to the best final year student teacher in the July intake of the Postgraduate Diploma in Education (Primary or Secondary) (Chinese Specialisation) programme and has obtained at least a Credit in the Teaching Practicum.
4	Education Studies	Justice Choor Singh Book Prize	Book Prize of \$400	The prize is awarded to the best student teacher in Education Studies with Distinction in Teaching Practicum in the final examination for the Postgraduate Diploma in Education (Secondary/Junior College) or Postgraduate Diploma in Education (Primary) programme.

No.	Subject	Name of Award	Type/Value	Criteria for Award
5	English Language	The Dr Shila Fernandez Prize	Cash Prize of \$600	The prize is awarded to the best student teacher in the Teaching of English Language in the programme leading to the Postgraduate Diploma in Education (Primary) programme. (With at least a B+ grade in Communication Skills for Teachers).
6	Geography	Geography Teachers' Association of Singapore Book Prize	Book Prize of \$300	The prize is awarded to the best student teacher in the Teaching of Geography and has obtained at least a Credit in the Teaching Practicum in the Postgraduate Diploma in Education (Secondary / Junior College) programme.
7	History	History Association of Singapore Book Prize	Book Prize of \$300	The prize is awarded to the best student teacher in the Teaching of History and has obtained at least a Credit in the Teaching Practicum in the Postgraduate Diploma in Education (Secondary / Junior College) programme.
8	Mathematics	Association of Mathematics Educators Book Prizes	2 Book Prizes of \$300 each	One prize is awarded to the best graduating student teacher in the Teaching of Mathematics in the Postgraduate Diploma in Education (Primary) programme and another is awarded to the best graduating student teacher in the Teaching of Mathematics or Teaching of Lower Secondary Mathematics in the Postgraduate Diploma in Education (Secondary / Junior College) Programme. The recipients must have obtained at least a Credit in the Teaching Practicum.

No.	Subject	Name of Award	Type/Value	Criteria for Award
9	Mathematics or Music	Wong Hee Hua Memorial Prizes	2 Cash Prizes of \$450 each	One prize is awarded to the best overall student teacher in Mathematics and the other to the best overall student teacher in Music graduating from the Postgraduate Diploma in Education (Primary) programme.
10	Physical Education	C. Kunalan Book Prize	Book Prize of \$600	The prize is awarded to the best graduating student teacher in Physical Education in the Postgraduate Diploma in Education (Specialisation in the Teaching of Physical Education at Primary or Secondary level) programme and has obtained at least a Credit in Teaching Practicum
11	Practicum	Singapore Teachers' Union Book Prize	2 Book Prizes of \$500 each	<p>The awards are presented to the best student teacher in the Teaching Practicum in the following programmes:</p> <ul style="list-style-type: none"> • Postgraduate Diploma in Education (Primary) • Postgraduate Diploma in Education (Secondary/Junior College) <p>The recipients must have qualified for the Postgraduate Diploma in Education with at least a Credit.</p>

No.	Subject	Name of Award	Type/Value	Criteria for Award
12	Science	SAAS Prize	3 Cash Prizes of \$500 each and a Certificate	<p data-bbox="999 271 1513 562">One prize is awarded to the best graduating student teacher in the Teaching of Science in the programme leading to the Postgraduate Diploma in Education (Primary) (General) and has obtained at least a Credit in the Teaching Practicum.</p> <p data-bbox="999 600 1513 922">Another prize for each intake is awarded to the best graduating student teacher in the Teaching of Biology or Physics or Chemistry in the programme leading to the Postgraduate Diploma in Education (Secondary / Junior College) and has obtained at least a Credit in the Teaching Practicum.</p>

Awards for outstanding performance in Leadership Programmes:

No.	Name of Award	Type/Value	Criteria for Award
1	Dr Ruth Wong Medals	2 Gold Medals	<p>One gold medal is awarded to the participant who exemplifies the highest performance in the Creative Action Project (CAP) in the Leaders in Education Programme.</p> <p>One gold medal is awarded to the participant who demonstrates the best overall performance in the Management and Leadership in Schools programme.</p>
2	Academy of Principals Prize for Leadership Learning	Book Prize of \$300	The prize is awarded to the participant who exemplifies the highest level of learning through the journal in the Leaders in Education Programme.
3	The Lee Kuan Yew Leaders in Education Programme Award	A plaque & \$1,000 Cash Prize	The plaque and \$1,000 cash prize are awarded to the participant who demonstrates the best overall performance in the Leaders in Education Programme (LEP).
4	Dr J.M. Nathan Memorial Prize for Curriculum Project	Book prize of \$200 & a certificate for each member of the team	The prize is awarded to the team that demonstrates the highest level of standard in its Curriculum Project as part of the assessment of the core course in the Management and Leadership in Schools.

Awards for outstanding performance in Master's Programmes:

No	Name of Award	Type/Value	Criteria for Award
1	Educational Management Gold Medal	Gold Medal	<p>One gold medal is awarded to the top graduate with outstanding performance in the Master of Arts (Educational Management) programme either through the Coursework with Dissertation route or Coursework Only route.</p> <p>The award is sponsored by the Singapore Teachers' Union (STU).</p>
2	ERAS Gold Medal	Gold Medal	<p>One gold medal is awarded to the top graduate with outstanding performance in the MEd programme through the Coursework with Dissertation route.</p> <p>The award is sponsored by the Educational Research Association of Singapore (ERAS).</p>
3	Instructional Design & Technology Gold Medal	Gold Medal	<p>One gold medal is awarded to the top graduate with outstanding performance in the MA (Instructional Design & Technology) programme or the MEd (Learning Sciences & Technologies) programme, either through the Coursework with Dissertation route or Coursework Only route.</p> <p>The award is sponsored by the Singapore Teachers' Union (STU).</p>
4	STU Gold Medal	Gold Medal	<p>One gold medal is awarded to the top graduate with outstanding performance in the MEd programme through the Coursework Only route.</p> <p>The award is sponsored by the Singapore Teachers' Union (STU).</p>

- | | | | |
|---|------------------------------|-----------------------|---|
| 5 | The Applied Psychology Award | Gold Medal | <p>One gold medal is awarded to the top graduate with outstanding performance in the MA (Applied Psychology) programme based on performance in courses and dissertation.</p> <p>The award is sponsored by the NIE's Psychological Studies Academic Group.</p> |
| 6 | Lau Teng Chuan Book Prize | Book Prize of \$1,600 | <p>One book prize is awarded to the best overall graduate in the Master of Science (Exercise and Sports Studies) based on the performance in sports science courses. The book prize is sponsored by the family of the late Dr Lau Teng Chuan.</p> |

Awards for outstanding performance in Doctor in Education Programme:

No	Name of Award	Type/Value	Criteria for Award
1	The Tan Poey Quee Doctor in Education (NIE-EdD) Book Prize Award for Best Dissertation	Book Prize of S\$500	One book prize is awarded for the best dissertation submitted for examination by the graduate from the Doctor in Education (NIE-EdD) programme. The Book Prize is sponsored by the family of the late Mdm Tan Poey Quee.
2	The Tan Poey Quee Doctor in Education (NIE-EdD) Gold Medal Award for Best Overall Student	Gold Medal plus cash award (total value of \$1,000, subject to availability of fund)	The medal is awarded to the top graduating student who has distinguished herself/himself in the Doctor in Education programme. The Gold Medal is sponsored by the family of the late Mdm Tan Poey Quee.

The Dean's Commendation for Research:

The Dean's Commendation for Research aims to reinforce to higher degree students the importance of publications in peer-reviewed international journals and books of international publishers for their research.

Students are recognised for having excelled in their research by publishing papers in peer-reviewed international journals or international refereed book chapters.

The Dean's Commendation for Research will be presented in the form of a certificate by the Dean of Graduate Studies and Professional Learning.

The NIE Wellness Centre

The NIE Wellness Centre, located at the basement level of BLOCK 2 (2-B1-01), provides confidential psychological services and counselling for student teachers free of charge. The NIE Wellness Centre also provides resources that help students to enhance their wellbeing and maximise their academic potential.

To make an enquiry and/or to see a counsellor, email us at nie.wellness@nie.edu.sg or call 6790 3318 between 9am to 5pm on week days. For more information go to <http://www.nie.edu.sg/about-us/campus-facilities/nie-wellness-centre> or like us on Facebook <https://www.facebook.com/niewellnesscentre>.

Facilities

ICT Facilities & Services

NIE has equipped the campus with Information and Communication Technology (ICT) facilities to support learning and teaching. All teaching facilities in NIE are equipped with ICT presentation systems. In addition, most rooms are specially designed to facilitate collaborative learning among student teachers. These rooms are equipped with mobile furniture arranged in group settings, LCD screens and some rooms with smart interactive whiteboards. Student teachers can tap on the learning environment using their mobile devices and wireless access. Wireless access is available to student teachers through iSurf@NIE. The Wireless access configurations can be found under [User Guides](#) on the Academic Computing and Information Services (ACIS) IT Services Website at <http://itservices.nie.edu.sg/>.

The newly renovated **Net Gen Learners' Terrace (NGLT)**, previously known as LT6, was launched in Jan 2017. It embodies new learning modes, innovative use of spaces and the emerging popular technologies to support NIE's teaching and learning framework. For more information on NGLT, visit <http://www.nie.edu.sg/news-detail/new-learning-facility-at-the-nie-campus>.

NIE Mobile Application

Student teachers and visitors can keep abreast of the activities relating to the Institute with **NIE Mobile** Application. Information required can be obtained on-the-go through this intuitive and user-friendly interface. For more information, please visit the Mobile Apps page on [ACIS IT Services Website](#).

NIEgo! (New!)

Launched on 30 June 2017, the **NIEgo!** is a new one-stop platform for student teachers to access information and essential services on the go. Customised based on student feedback, the user-friendly app incorporates key features such as course registration, view timetable, check exam results and many more. Download the app today via [Apple App Store](#) or [Google Play Store](#).

Printing & Photocopying Services

There are printing services available at the NIE Library and Student Hub for student teachers to print or photocopy their assignments, notes, reports and other teaching materials at reasonable prices through convenient payment modes via cash card and EZ-link card. For more information, please visit the **Photocopy** or **Laser Printing** page on [ACIS IT Services Website](#).

NIE Portal

A variety of online services can be accessed by student teachers via **NIE Portal** (<http://portal.nie.edu.sg>). Such services include GeNIEus (NIE Blackboard), Student Time Table, Student Exam Results, MOE HR Online@NIE and other student related services. The NIE Community in the NIE Portal allows the creation of personal blogs, Carpooling, Marketplace and many other forums exclusively for NIE.

Learning Platforms and Resources

Student teachers can access NIE main learning platform, GeNIEus (also known as Blackboard) via NIE portal. Check out the *Student Lounge* and *My Institution* in GeNIEus, for more information about your course and various educational technology tools, resources and guides that you can explore and use. GeNIEus workshops are conducted for student teachers at the beginning of every semester.

Mobile Apps for Learning

In collaboration with academic groups in NIE, the IN-Learning has created free native iOS, Android and web apps for learning. Beside NIE mobile apps, we also recommend some popular educational apps. More information about these apps and their links for download can be found at <http://www.in-learning.nie.edu.sg/genieus/mobileapps.html>. Check out the pedagogical use of some of the NIE apps at <http://www.nie.edu.sg/office-teacher-education/nie-innovative-pedagogy>

Library and Information Services Centre (LIBRIS)

Founded in 1950 as the Teachers' Training College Library, the NIE Library and Information Services Centre (LIBRIS) is the largest education library in Singapore. The Library provides resources and services to support the teaching, learning and research programmes of the Institute. It also reaches out to meet the needs of the education professionals in the Ministry of Education, schools and other related organisations.

Opening Hours

Term Time	Weekdays: 8.30 am - 8.00 pm Saturdays: 8.30 am - 5.00 pm
Vacation Time	Weekdays: 8.30 am - 5.15 pm Saturdays: 8.30 am - 1.00 pm
Sundays & Public/University Holidays	CLOSED

Note: Counter services cease 30 minutes before the Library closes.

Contact Information & Essential URLs

Telephone	+65 6790-3626
Email	libris@nie.edu.sg
Library Portal	http://libris.nie.edu.sg
Know Your Library	http://libris.nie.edu.sg/know_your_library

Membership

All full-time student teachers are automatically registered as Library members. Your matriculation card is your library card. If you lose your card, please report to the Loan Counter immediately to prevent unauthorised use of the card.

Resources (as at 31 Dec 2016)

The Library houses an overall collection of 655,890 items. Users have access to 375,557 volumes of books, 151,830 e-book titles, 640 print journal titles, 47,038 e-journal titles, 47,219 volumes of AV materials, 5,290 digital video titles, 106 databases and 10,782 items in the digital repository. Special collections include the Singapore Educational Resources, the C.J. Koh Collection which focuses on teacher education/teaching methods, and Instructional Resources for teachers.

Services

Our team of friendly staff offers assistance in the use of library resources and services at the Service Point. Selected resources and services are also accessible on-the-go via mobile devices. For research consultation or instructional sessions, users may request one-to-one appointment or group instruction. Cashcard- and EZlink card-operated photocopiers and network printers are available on Levels 2 and 4 of the Library.

Facilities

Knowledge Space, Collaborative Space and Service Space of the Library provide flexible spaces for self-study, collaborative learning,

and research. The Knowledge Space on Level 4 comprises mainly books and reading areas. The Collaborative Space on Level 3 includes a general area for information sharing, intellectual collaboration and social interactions; learning pods for group discussions; a SMART (Sharing, Multidisciplinary, Autonomous, Reflective and Technology-enabled) Room with modular furniture and AV equipment; a gallery to showcase NIE intellectual output and donor's collection; and a lifestyle café. The Service Space on Level 2 houses the service point, reserves, non-English collection, quiet study areas and a research commons for information searching, collaborative work and instructional sessions.

The Nanyang Playhouse

The Nanyang Playhouse is a free-standing building close to the Arts Building. It houses purpose-built spaces for the Drama programme - performance area, workshop, rehearsal room, wardrobe, classroom and office. The performance area is a 'black box' - that is, it is predominantly black to minimise interference with all-round lighting design capacity, and has no fixed seating. A flexible system of portable risers and platforms allows for many configurations of audience seating and temporary stage arrangements. Seating numbers vary according to the set-up used: the maximum is around 150 and 120 could be regarded as optimal. The spaces constitute the Drama programme's teaching areas as well as being used for performance. The Drama programme operates from within the Visual and Performing Arts Academic Group.

The Art Gallery

The Art Gallery is designed as a teaching space and for student teachers' exhibitions, as well as for hosting local, regional and international shows.

Its mission is to support pedagogy, research and practice aspects in the Visual and Performing Arts programme. It extends the teaching

of Visual Arts beyond the boundaries of the art studios/classrooms by providing:

1. A platform for the extension and exchanges of visual ideas
2. Opportunities for student teachers to develop and curate art exhibitions.

The Art Gallery is situated in a prominent and accessible location next to the Arts Block along Nanyang Crescent. Its Committee welcomes exhibition proposals from schools, staff members and artists.

NIE Student Hub U.iD

There is a NIE Student Hub U.iD on campus which is equipped with an amphitheatre and six meeting rooms. One meeting room is for use by NIE Student Services Centre and another by NIE student clubs while the other four rooms are furnished with comfortable furniture for student teachers to relax, socialise, enjoy campus life and conduct club activities.

The opening hours of the Hub are as follows:

Mondays to Fridays	:	7.30 am to 8.30 pm
Saturdays	:	7.30 am to 4.30 pm
Sundays & Public Holidays	:	Closed.

The term “U.iD” stands for “Unity in Diversity”. It reflects the primary role of the NIE Student Hub in bringing together student teachers from all initial teacher preparation programmes, teachers from graduate programmes as well as alumni. In addition, the abbreviation “U.iD” may also be loosely interpreted as “your i.d.” or “your identity” reflecting how the NIE Student Hub could be the place where student teachers carve out their niche or identity through student-led activities.

Student Services Centre

The Student Services Centre (SSC) is a one-stop service centre that caters to the administrative needs and general enquiries of students and alumni.

Location of SSC

Block 3B, NIE Student Hub, Level 1
1 Nanyang Walk
Singapore 637616

Operating Hours of SSC

Mon - Thu	: 9 am to 5 pm
Fri	: 9 am to 4.30 pm
Sat, Sun & Public Holidays	: Closed

Scope of Services

Requests

- Application for Research Workstation in Higher Degree Study Room
- Application for Transcript
- Booking of Student Hub facilities
- Request for Additional Copy of Exam Results by Non-Graduating Students
- Request for Certification Letter
- Request for certification of 'True Copy' on photocopied NTU/NIE certificates (NIE graduands are advised to make an appointment before coming down to SSC)
- Request for NTU Email Account (applicable to only higher degree students)
- Request for Statement for Lost Certificate

- Request for Update / Amendment of Student's Particulars
- Request and Payment for Duplicate Copy of Examination Results
- Request and Payment for Review of Exam Results

Cards

- Application for Tertiary Student Concession Card (for eligible student teachers only)
- Registration/Matriculation Cards
- Student Name Cards

Enquiries

- Financial Aid
- Accommodation
- Insurance Claims
- Lost and Found
- Medical Scheme

Please visit our FAQ Portal 'Got A Question? Ask Us!' at <http://nie.custhelp.com>.

Collection of Fees

- Admin fees
- Tuition and Research fees
- Hostel fees
- Medical fees

E-Matriculation

- E-Matriculation of student teachers and higher degree students
- Verification of documents for Coursework (non PDCM), Research and Non-Graduating Students

Forms

- Authorisation Form for Certification of Document (s)
- Authorisation Form for Collection of Document (s)
- Facilities Booking Form
- Indemnity Form & Travel Insurance
- Locker Application
- Requisition for Goods and Services
- Undertaking by Students for using ISOS Services
- Update / Amendment of Students' Particulars Form

Self-Service Corner

There are 4 workstation PCs, 4 printers (3 black & white and 1 colour) and 1 photocopier at the Self-Service Corner in NIE Student Hub, level 1. These services are meant to provide students with the ease to print or photocopy documents. Card payment is by EZ-Link, FlashPay or CashCard. Students may contact NIE's Service Provider, Seng City's hotline number displayed at the Self-Service Corner if they encounter problems.

Self-Service Kiosks

There are 4 workstation touch-screen PCs located outside Student Services Centre to provide students with the ease to access a one-stop information service such as checking of portal information, updating of student profile, accessing student online applications and printing of online services forms.

Drop-Boxes

Drop-boxes are located outside SSC to enable students to drop their documents/forms for various purposes like:

- Submission of MCs
- Leave Applications
- Cheque Deposit
- Feedback

Sports and Games Facilities

National Institute of Education (NIE) physical education complex is a teaching facility and is covered under the Ministry of Manpower (MOM) Workplace Safety and Health Act (WSH Act) since September 2011. The Act relates to management of health and safety at work requiring a risk assessment to be undertaken to identify the hazards and take necessary steps to reduce the risk of an incident. All users of the sports facilities will be required to adhere with the Safety Rule and Regulations governing the appropriate use of the Sports and Games Facilities. Users will be briefed on the Emergency Procedures in the event of an incident.

There are outdoor and indoor sports facilities at the Institute's physical education complex. Outdoor facilities include an artificial turf hockey pitch, a teaching pool, four tennis courts, two sepak takraw courts, one handball court for handball, netball and futsal and three covered outdoor courts which can be used for basketball, tennis, netball and volleyball. As for indoor sports, there are five squash courts and a large multipurpose sports hall which can accommodate several activities. There is a fully-equipped weight-training facility, cardiovascular training facility and a studio for dance. Users of the Cardiovascular and Resistance Training Rooms are required to purchase their own TGS key for the exercise machines and attend an orientation briefing by the Gym supervisor.

All facilities are meant for teaching purposes but can be booked for recreation outside the teaching schedule, on an approval basis.

Canteens

The canteen is located on Basement 1 of Block 4. There are 10 stalls in the canteen selling a variety of food and drinks. Four of the stalls serve Halal food. The canteen is open from 7.00 am to 3.00 pm on Mondays to Fridays. Other canteens are also available within the Yunnan Garden Campus of NTU.

Telephones for Emergency Use

Telephones for use in an emergency are located outside some of the tutorial rooms and near staircase landing of levels 2 and 3 in Blocks 2, 3, 5 and 7 (refer to the NIE location map at the end of this handbook for the location of the telephones on the plaza level). These telephones are for internal use only, i.e. for calls to be made within the campus. Some essential numbers are:

Building and Related Services:	24 hours Fault Reporting Centre	6790-3000(ext)
Campus Security Service:	24 hours Campus Security	6790-3999(ext)

Car Parks

There are six car parks in the campus which are open to staff, student teachers and visitors. Car Park 1, Car Park 2, Car Park 3, Car Park 4, Car Park 5 and Car Park 7 are operating on an Electronic Parking System (EPS). This system is based on the Electronic Road Pricing technology that is in use on roads in Singapore. The EPS works by having antennas at the entry and exit points of the car parks which allow vehicles to enter and leave the car parks by in-vehicle unit (IU) identification for users.

The pay parking operating hours and rates are:

Operating Hours

Mondays to Fridays: 8.00am to 6.00pm

Parking is free for other times, on weekends and Public Holidays.

Rates

<i>Car Park</i>	<i>Rate</i>
Car Park 1	2.7 cents per minute Maximum cap of \$6.50* per day with NO multiple entries to below-mentioned car parks (including Car Park 1)
Car Parks 2, 3, 5 & 7	2 cents per minute Maximum cap of \$4.80* per day for multiple entries to any of these 4 car parks (excluding Car Park 1)
Car Park 4	1.5 cents per minute Maximum cap of \$2.40* per day for multiple entries to the same car park only

*The free parking periods and parking charges may be reviewed from time to time.

Wheel clamping is enforced in the campus. Vehicles which are parked illegally or indiscriminately may be wheel clamped. A fee of \$50 is imposed for the release of the wheel clamp.

Bicycle Stands

Bicycle stands are located in the following buildings: Block 2 (level B1), Block 3 (levels B1 and B3), Block 5 (levels B3 and B4), Block 7 (levels B1 and B3) and Block 7A (level B4).

Motor Cycle Parking Lots

Motor cycle parking lots are available in Car Park 1, Car Park 2 (between Blocks 2 and 3), Car Park 3 (opposite Bin Centre at Block 4), Car Park 4 (near covered walkway leading to Block 4), Car Park 5 (beside Block 5) and Car Park 7.

Other Amenities

There are drinks vending machines installed at the basement levels of Blocks 2, 3, 5, 7, level 1 of the NIE Student Hub (U.iD), shed near the tennis courts and in the canteen.

There are vending machines installed at level 1 of the Canteen and basement 1 of Block 7 dispensing hot meals.

There are snacks vending machines installed at level 1 of the Canteen, basement 1 of Block 2 and basement 3 of Block 5.

Hot water dispensers are located in the canteen and in all the main buildings in the campus on levels 1 and 3.

The Campus Bookshop sells a wide variety of items including prescribed textbooks and stationery is located on basement 1 of the Canteen.

There are rooms for nursing mothers on level 2 of Blocks 2, 3 and 7. User is to exchange for an access card with any form of personal identification at the Student Services Centre located at the Student Hub, NIE3B-01-SSC to enter the nursing rooms.

Operating Hours for Nursing Rooms

Mondays to Fridays: 9.00am to 5.00pm

Closed on Weekends and Public Holidays

Smoking on Campus

There are no designated smoking areas on campus, but smokers are expected to comply with guidelines set by the National Environment Agency (NEA).

This includes smoking only in open areas such as car parks, which must be at least five metres away from building entrances and exits.

Bookstore

The bookstore is located at Basement 1 of the Library Building (NIE 4-B1-10), next to canteen.

Opening Hours (School Term)	Monday – Friday Closed on Weekends & Public Holidays	9.00am - 7.00pm
Opening Hours (Vacation Period)	Monday – Friday Closed on Weekends & Public Holidays	9.00am – 5.00pm
Merchandise	Text & Reference Books Stationery Sundry Goods Snacks & Beverages Souvenirs	

NTU Facilities/Services

The following facilities/services in NTU are available for use by all student teachers:

1. NTU Sports & Recreation Centre
2. Medical Scheme
3. Hostel Accommodation

NTU Sports & Recreation Centre

The NTU Sports & Recreation Centre (SRC) caters to the sporting and recreational needs of the University community. It organises various intra-mural, extramural and inter-tertiary (both local and overseas) competitions for student athletes from NTU and NIE. SRC also organises recreational programmes such as Re'kre-at and Pretty Tuff for the student population every semester.

Bookings of selected sporting facilities can be made either online or in person at the SRC. Facilities bookings for events are only applicable for organised groups supported by their staff advisor. There is also a wide selection of balls for different sports available for loan at the counter. Showering facilities and free lockers are also provided at the SRC.

Sports Facilities in NTU

The NTU SRC offers the following sports facilities:

Indoor Facilities (Within the Centre)

- The Wave Sport Building comprising :
 - 1 Multipurpose sports hall (can be configured for different uses to support 3 basketball / Volleyball courts, 1 netball court or 13 badminton courts, at any one time.
 - Spectator seating capacity of 950 pax
 - Athletes' Conditioning Gym
 - 3 Activity rooms

- 3 Multi-Purpose Sports Halls (for Volleyball, Floorball, Netball, Sepak Takraw, Basketball, Martial Arts, Archery, etc.)
 - 2 Sports Halls with estimated gallery seating capacity at 200 pax each.
 - 4 Activity Rooms catering to Martial Arts, Dance, Aerobics, Bouldering Wall, etc
 - 1 Cardio Gym @ Sports Hall 3

These facilities are targeted for demolition for pool redevelopment project in 2018

- 4 Squash Courts

Others (Outside the Centre)

- North Hill comprising :
 - 1 multipurpose halls (can be configured for 4 badminton courts and 6 table tennis tables or 2 basketball courts at any one time)
 - 500m² Recreational Gym

Outdoor Facilities (Within the Centre)

- 1 Archery Range
- 2 Cricket Training Cages
- 1 8-Lane, 400m Running Track
- 2 Spectator Galleries (with estimated gallery seating capacity of 800 pax each)
- 1 Main Field (artificial turf) for Football, Touch Rugby, Rugby
- 2 Multi-Purpose Fields (artificial turf) for Softball, Football, Rugby, Cricket, Ultimate Frisbee
- 3 Basketball Courts
- 1 Street Soccer Court
- 3 Multi-Purpose Courts for Handball, Netball, Football, Martial arts
- 6 Tennis Courts (one with practice wall)

Others (Outside the Centre)

- 2 Tennis courts (at Hall of Residence 7)
- 1 Street Soccer Court (at Hall of Residence 2)
- 1 Volleyball Court (at Hall of Residence 2)
- 4.3 km Rubberised Surface Jogging Path

Aquatic Facilities (Within the Centre)

- 1 50m 8-Lane Swimming Pool
- 1 Diving Pool
- 1 Children Wading Pool

These facilities are targeted for demolition for pool redevelopment project in 2018

For further details, please refer to this website:

<http://www.ntu.edu.sg/has/SnR/Pages/index.aspx>.

Medical Scheme

The Medical Scheme is compulsory for all matriculated full-time undergraduate and graduate students in NTU and NIE.

For more details on the Medical Scheme, please visit <http://www.ntu.edu.sg/STUDENTS/UNDERGRADUATE/STUDENTSERVICES/HEALTHANDCOUNSELLING/MEDICALINSURANCESCHEMES/Pages/Medicalscheme.aspx>

Group Personal Accident (GPA) Insurance Scheme

Full-time NTU undergraduates, NIE student teachers and higher degree students are required to be covered under the GPA Insurance Scheme.

For more details on the GPA Insurance Scheme, please visit www.ntu.edu.sg/Students/Undergraduate/StudentServices/HealthAndCounselling/MedicalInsuranceSchemes/Pages/GPAI.aspx

Students who have an injury and would like to claim insurance can refer to <http://www.nie.edu.sg/student-services-centre/insurance-claims> for the procedure.

Group Hospitalisation & Surgical Insurance (GHSI) Scheme

In addition to the GPA scheme, University policy also requires the following full-time students in NIE to be covered under the GHSI scheme:

- international and SPR student teachers
- exchange/non-graduating students
- local, international and SPR students in higher degree programmes

For more information about the GHSI, please visit www.ntu-ghs.com.sg

Students who would like to claim insurance can refer to <http://www.nie.edu.sg/student-services-centre/insurance-claims> for the procedure

Student Accommodation on NTU Campus

The current twenty-one Halls of Residence are home to some 12,000 students. Additional hall places at Nanyang Crescent are available in the new academic year for students to apply to. This community forms a massive family unit, actively engaging in social exchange and mutual help. Living in a hall is a unique experience that can only be reminisced about.

The halls of residence offer similar styled accommodation. With the exception of Halls 1 & 2 which offer shared suite-style attached shower and toilets, all halls have gender specific communal showers and toilets. All halls are co-ed by floor or wing and offer single and double occupancy rooms. Double rooms are shared by residents of the same gender. Rooms are furnished with a desk, desk chair, shelving, bed and wardrobe per resident and are equipped with network points connected to the university's computer network. All rooms at Halls 3, 5, 8, 9, 10, 11, 12, 13, 14, 15,16 and some rooms at Crescent Hall, Pioneer Hall, Binjai Hall, Tanjong Hall, Banyan Hall and new Hall/s at Nanyang Crescent are fitted with air-conditioners on a pay-for-use basis. Every hall has communal facilities like lounges, air-conditioned reading rooms, pantries and laundry rooms with washing machines and dryers.

Current rental fees on per-person-per-month basis in various halls in NTU are as follows:

	Rental Fees
Single Room (Non Aircon)	\$350 - \$400
Single Room (Aircon)	\$395 - \$435
Twin-sharing Room (Non Aircon)	\$250 - \$290
Twin-sharing Room (Aircon)	\$290 - \$325
*Single Room (Plus-sized and Aircon)	\$440
*Single Room (Attached bathroom and Non-Aircon)	\$500
*Single Room (Attached bathroom and Aircon)	\$580

* New room types are available for new Hall/s at Nanyang Crescent

The rental fees are subject to revision in August every year. Please visit this website for rental rates for each Hall : http://www.ntu.edu.sg/has/Undergraduate/HallsofResidence/Pages/UG_SummaryOfRates.aspx

New students in NTU-NIE Teaching Scholars Programme (TSP) assured of a place in a Hall of Residence must also submit their application. Students in this programme are assigned to either Crescent Hall or Pioneer Hall.

New students may indicate their preference for either a single or a twin-sharing room, air-conditioned or non-air-conditioned room. Assignments to preferred room types are subject to availability from the rooms set aside for new students. Applicant will be assigned to another room type if his/her preferred room type is unavailable. Due to the limited empty rooms available, there is a high possibility that successful students and his/her successful room mate who wish to stay together are not allocated to the same room.

Alternative off-campus accommodation arrangement such as Online Portal and private Student Hostels are also available:

i) Off-Campus Accommodation System (OCAS) on NTU Office of Housing & Auxiliary Services Office (HAS)'s website. You could access https://wis.ntu.edu.sg/webexe/owa/oca_main.mainpage with your matric and pin number.

Off-campus accommodation guide book:
<http://www.ntu.edu.sg/has/Off-campus/Pages/index.aspx>

ii) EM Services Pte Ltd which offers furnished quad sharing rooms in Jurong East Hostels. Please contact telephone number 6275 8880 or visit their website : www.yoha.com.sg

iii) Student Hostel @ Jurong West which provides student apartments at Jalan Bahar, a short bus ride from the campus grounds. Please contact Ms Eileen Ng at telephone number 9832 1969 .

iv) Scholars Residence @ Yuan Ching which offers fully furnished units on per apartment basis. Please contact telephone number 9181 9928 or visit their website: www.scholarsresidence.com

For more information on hall living, please visit the website at <http://www.ntu.edu.sg/has/Undergraduate/HallsOfResidence/Pages/Halls.aspx>

Accommodation for Higher Degree International Students

International students are advised to seek off-campus accommodation as there are limited places for on-campus accommodation in NTU. On-campus accommodation is also not available for married couples. Students with spouse or family are advised to find their own accommodation outside the University.

International students who wish to rent a room or an apartment outside campus may log on or contact the following:

- i) Off-Campus Accommodation System (OCAS) on NTU Office of Housing & Auxiliary Services (HAS)'s website. You could access

https://wis.ntu.edu.sg/webexe/owa/oca_main.mainpage with your matric and pin number.

Off-campus accommodation guide book:

<http://www.ntu.edu.sg/has/Off-campus/Pages/index.aspx>.

- ii) EM Services Pte Ltd offers furnished, newly constructed single or twin-sharing and triple / quad sharing rooms at Jurong East. For more details, please contact 6261 7083 or 6560 7122 or visit website at www.yoha.com.sg/.

- iii) Jalan Bahar Student Hostel which provides student apartments at Jalan Bahar, a short bus ride from NTU and NIE. For details, please contact : 9129 3688 or email : eileen@jianyu.com.sg.

- iv) Scholars Residence @ Yuan Ching offers 31 furnished and fully equipped apartment units with 93 common rooms and Master Bedroom suites. For more details, please refer to website at <http://www.scholarsresidence.com>.

- v) Browse through the local newspaper The Straits Times, classified section on 'Rental'.

Trainee Teachers' Club

The Nanyang Technological University Students' Union (NTUSU) is the supreme body of students in NTU (including NIE). Membership of the NTUSU is automatic for the following categories of student teachers in NIE:

- a) Matriculated student teachers who are reading a full-time undergraduate programme of study leading to a Bachelor's degree;
- b) Student teachers not holding a Bachelor's degree who are reading a full-time programme of study leading to a diploma, the duration of which is not less than two academic years;
- c) Graduate student teachers pursuing a full-time programme of study leading to the Postgraduate Diploma in Education for a duration of either 16 months or two years in the case of a candidate specialising in Physical Education.

The NTUSU consists of constituent bodies, of which the Trainee Teachers' Club is one of them. Only student teachers who are members of the NTUSU are eligible for full membership of the Trainee Teachers' Club.

Student teachers of NIE other than those defined under ordinary membership and students from other schools in NTU may apply for affiliate membership subject to the approval of the Management Committee and recommendation of the Advisor of the Club.

The main role of the Trainee Teachers' Club is to promote and safeguard the interests and welfare of student teachers in NIE. The Trainee Teachers' Club comprises 9 sub-clubs:

- a. Bachelor of Arts Club
- b. Bachelor of Science Club

- c. Chinese Language Education & Research Club
- d. Club Jeux
- e. DanceFuzion
- f. Food and Consumer Sciences Club
- g. Physical Education and Sports Science Club
- h. Service Learning Club
- i. Tamil Language Club

Together with its sub-clubs, the Trainee Teachers' Club organises a range of social, sports, cultural and educational activities for student teachers.

The administration of the Trainee Teachers' Club is vested in the hands of an elected Management Committee. The elections are held annually. The Committee members hold office from the date of election until the next occasion upon which a new Committee is elected.

The Club's Management Committee operates with the advice and guidance of two Club Advisors. Director/NIE is the Chief Advisor whilst an academic staff from NIE is appointed to be the Second Advisor.

Other Student Organisations

Besides the Trainee Teachers' Club, there are more than 100 student organisations which cater to a variety of interests among NTU students and NIE student teachers. Details of NTU student organisations can be found at <http://www.ntu.edu.sg/CampusLife/Clubs/Pages/default.aspx>.

There is one club in NIE that is not a constituent club of the NTUSU but is registered with the Registry of Societies as an independent student body. This is the Malay Language and Cultural Society (MLCS). Their sole purpose is to promote Malay Language, literary, cultural, educational interests and activities in NIE.

CCA System

There is a CCA System which allows student teachers to keep a record of their CCA participation during their programme of study at NIE. Student teachers can follow the steps below to access the CCA system:

- Go to <http://portal.nie.edu.sg/> and log in as a user.
- Click on 'My Workspace' followed by 'Online Services' and 'Current Curriculum Activities'.

For more information on the CCA system, student teachers can follow the steps below to access the CCA User Guide:

- Click on 'Student Services' followed by 'Co-Curricular Activities' and 'Co-Curricular Activities' again.

Student teachers should have all the necessary supporting documents to help them accurately enter the CCA details into the CCA System.

The CCA record will only capture the following 5 groups of CCA:

- Activities within NTU
- Activities within NIE
- Activities representing NTU
- Activities representing NIE
- NIE driven projects/programmes.

Student teachers can key in information about their CCA activities outside NIE/NTU. However they will not be reflected in the NIE CCA Record.

At any point of their study in NIE or before they graduate, student teachers can request for an official copy of their CCA Records at the Office of Teacher Education - Programme & Student Development Unit at Block 2, Level 3. For verification purposes, student teachers will have to bring along all documentary proof for the CCAs that they have keyed in.

The NIE Club Award

The NIE Club Award serves to recognise NIE clubs that have significantly contributed to student life on campus and/or contributed to NIE in terms of promoting the brand name of NIE, and undertaking projects to serve the Institute community. All clubs except the Trainee Teachers' Club (TTC) are considered for the award.

The period of review will be the current academic year and the following six awards will be given to clubs which satisfy the criteria. Winning clubs will receive a cash award of \$300 for each of the following awards, which can be used for club activities in the next academic year.

1. Innovative Project Award

Criteria for Consideration:

- The Project must be new, such that it is an original idea and has not been held or organised in NIE before.
- The Project has to reach a certain level of student participation, such that there must be a minimum number of students, be it club or non-club members, participating and being involved in the Project.
- The Project has to have the potential of continuity over the next 2/3 years.

2. Sustained Project Award

Criteria for Consideration:

- The Project is consistently carried out each year for the past 3 years.
- The Project involves participation from both club and non-club members.
- The club has to prove that the Project is well received by the NIE population with an increase in participation rate (based on size of turnout, surveys, etc).

3. Active Club Award

Criteria for Consideration:

- High frequency of high quality events involving the participation of the NIE community and/or NTU students.
- Undertakes joint projects with TTC/NIE/NIE Clubs.
- Involve students who are not club members in the organisation of their event(s).
- Constantly displays a level of vibrancy within the NIE campus that contributes to the NIE community and its programmes.
- Significant percentage of increase in the number of club members.

4. Improved Club Award

Criteria for Consideration:

- The Club has seen a significant increase in membership over the past year(s) (will be moderated for clubs with a small base percentage to begin with).
- The Club has embarked and organised more activities and events for the academic year compared to the past year(s).
- The Club has held events that have involved participation from both club members and non-club members.
- The quality of the events organised has improved.

5. Strong Partnership Club Award (Local)

Criteria for Consideration:

- Partners itself and collaborates with other NTU Clubs / NIE Clubs/ TTC / Local Universities.
- Seeks strategic partnerships with local companies.
- Constantly involves itself with local events within the campus or in public activities and events.

6. Strong Partnership Club Award (Overseas)

Criteria for Consideration:

- Seeks strategic partnerships with overseas companies / partners / foreign universities.
- Constantly involves itself with local events within the campus or in public activities and events.

The Passion Award

The Passion Award, introduced in 2005 is to acknowledge dedicated and committed student teachers for their invaluable service to the NIE community.

A maximum of 12 such awards is given annually to recently graduated beginning teachers who satisfy the following selection criteria:

1. Served the NIE community consistently and whole-heartedly during their programme of study at NIE
2. Initiated and organised activities that added vibrancy to student life on campus
3. Promoted the brand name of NIE through activities and projects
4. Contributed time and effort beyond the call of duty
5. Played a significant role in recruiting student teachers for student activities
6. Should have at least passed their final year examinations and Practicum.

An Honour category for the award is given to two most deserving of the awardees in the area of service to NIE.

The NIE Award

The NIE Award represents the National Institute of Education's recognition of student teachers who have excelled in academic, co-curricular areas and service to the Institute's community. Recognition will be given for work in developing students' CCAs or activities, assisting with administration in some NIE initiatives, or for leadership in projects which had significant impact on the Institute's community, or reputation.

One award is presented to the awardee of the following initial teacher preparation programmes (including specialisations) at each Teachers' Investiture Ceremony:

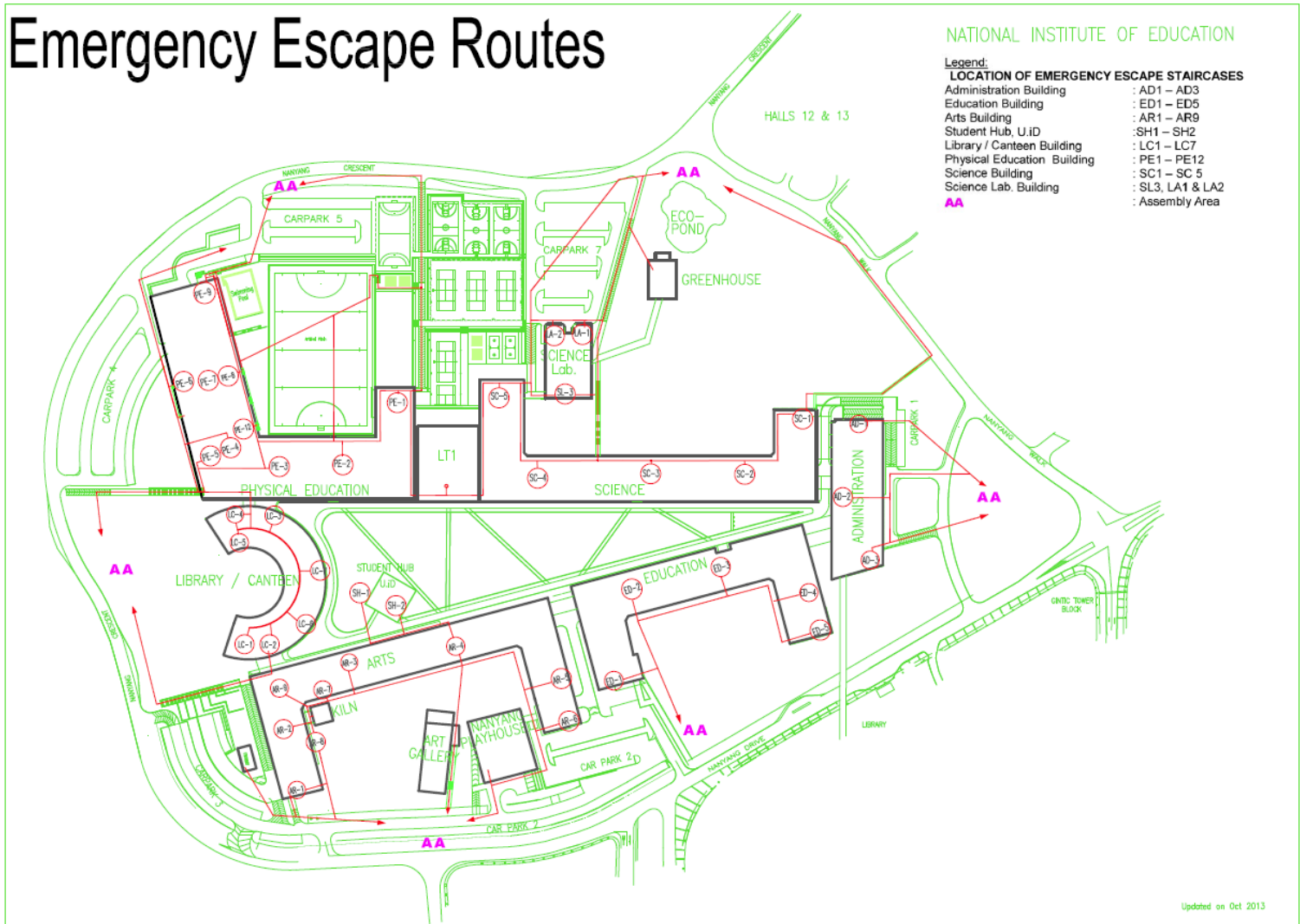
- Postgraduate Diploma in Education (Primary, Secondary or Junior College)
- Diplomas
- Bachelor of Arts (Education) or Bachelor of Science (Education).

Each NIE Award comprises a Certificate of Recognition and cash prize of \$300 each.

Candidates for the NIE Award must have qualified for the award of their respective programmes with excellent academic performance and a proven record of active co-curricular activities participation within the NIE and/or significant contribution in service to the NIE community.

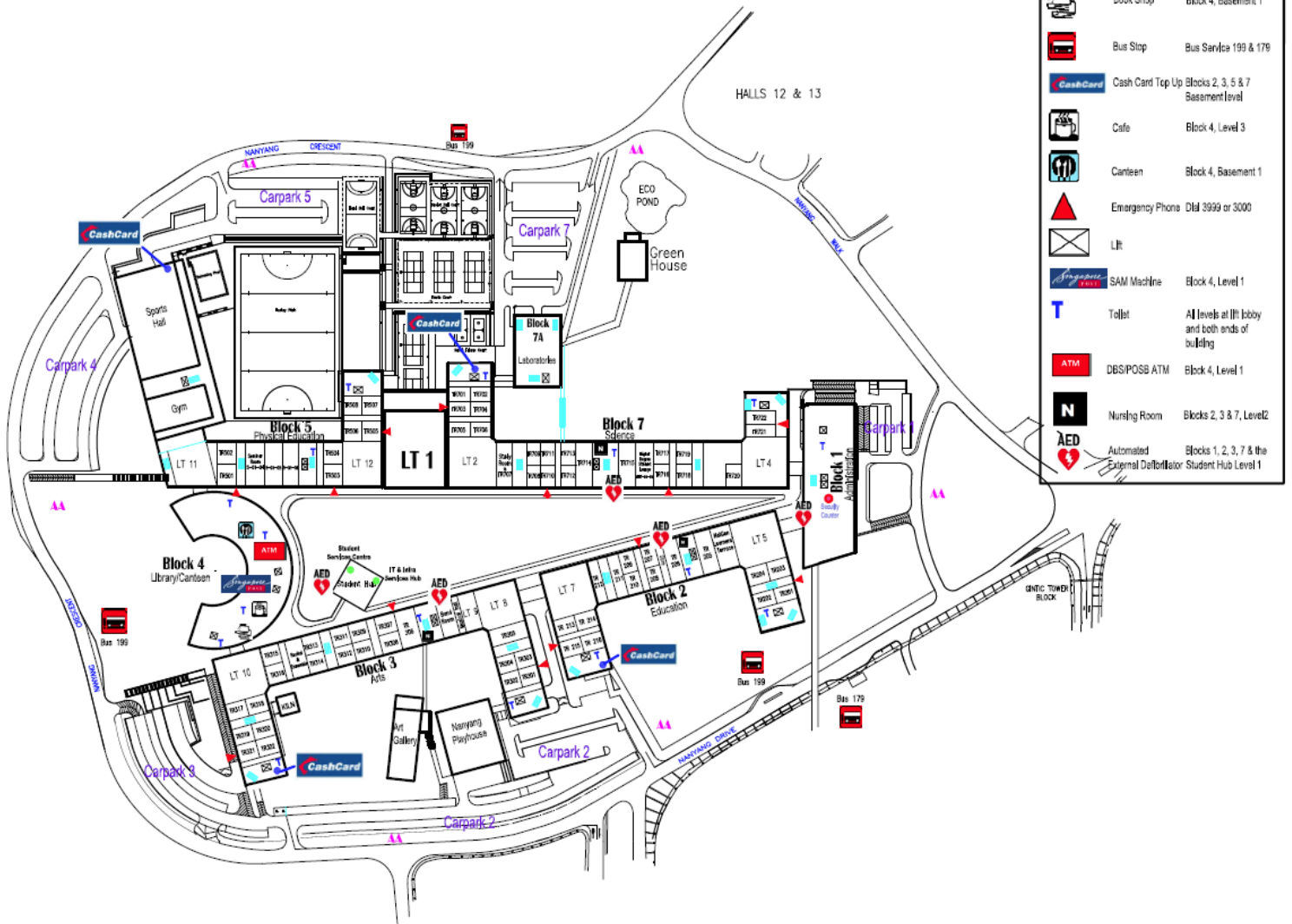
Emergency Escape Routes

In the event of an emergency situation occurring in the campus, such as, a fire, all student teachers will be evacuated from the buildings to designated assembly areas in the car parks. The emergency escape routes are shown in the map at the end of this handbook. Maps showing the emergency escape routes and the assembly areas are also displayed behind the doors of all lecture theatres and tutorial rooms.



NIE Location Map

NIE Location Map



LEGEND

	Assembly Area for Emergency Evacuation
	Book Shop Block 4, Basement 1
	Bus Stop Bus Service 199 & 179
	Cash Card Top Up Blocks 2, 3, 5 & 7 Basement Level
	Cafe Block 4, Level 3
	Canteen Block 4, Basement 1
	Emergency Phone Dial 3999 or 3000
	Lift
	SAM Machine Block 4, Level 1
	Toilet All Levels at lift lobby and both ends of building
	DBS/POSB ATM Block 4, Level 1
	Nursing Room Blocks 2, 3 & 7, Level 2
	Automated External Defibrillator Blocks 1, 2, 3, 7 & the Student Hub Level 1